



LARGE SYNOPTIC SURVEY TELESCOPE

## Large Synoptic Survey Telescope (LSST) Systems Engineering

# Data Products Definition Document

M. Jurić, T. Axelrod, A.C. Becker, J. Becla, E. Bellm, J.F. Bosch,  
D. Ciardi, A.J. Connolly, G.P. Dubois-Felsmann, F. Economou,  
M. Freemon, M. Gelman, R. Gill, M. Graham, L.P. Guy, Ž. Ivezić,  
T. Jenness, J. Kantor, K.S. Krughoff, K-T Lim, R.H. Lupton,  
F. Mueller, D. Nidever, W. O'Mullane, M. Patterson, D. Petravick, D.  
Shaw, C. Slater, M. Strauss, J. Swinbank, J.A. Tyson,  
M. Wood-Vasey, and X. Wu

LSE-163

Latest Revision: 2019-12-05

**Draft Revision NOT YET Approved** – This LSST document has been approved as a Content-Controlled Document. Its contents are subject to configuration control and may not be changed, altered, or their provisions waived without prior approval. If this document is changed or superseded, the new document will retain the Handle designation shown above. The control is on the most recent digital document with this Handle in the LSST digital archive and not printed versions. –

**Draft Revision NOT YET Approved**

## Abstract

This document describes the data products and processing services to be delivered by the Large Synoptic Survey Telescope (LSST). LSST will deliver three levels of data products and services. **Prompt** data products are computed and released within 24 hours of observation, and include images, difference images, catalogs of sources and objects detected in difference images, and catalogs of Solar System objects. Their primary purpose is to enable rapid follow-up of time-domain events. **Data Release** data products are computed during annual processing campaigns, and include well-calibrated single-epoch images, deep coadds, and catalogs of objects, sources, and forced sources, enabling static sky and precision time-domain science. The **Science Platform** will allow for the creation of **User Generated** data products and will enable science cases that greatly benefit from co-location of user processing and/or data within the LSST Archive Center. LSST will also devote 10% of observing time to programs with special cadence. Their data products will be created using the same software and hardware as Prompt and Data Release products. All data products will be made available using user-friendly databases and web services.

## Change Record

Version	Date	Description	Owner name
1	2013-10-07	Initial release	Mario Juric
2	2016-09-26	Implementation of LCR-758 Update Data Products Definition Document, LSE-163	Gregory Dubois-Felsmann (LCR), Tim Jenness (document), Robert McKercher (Docushare)
3.0	2017-07-03	Implementation of LCR-962. Reference LSE-61 requirements. Minor clean ups.	Tim Jenness
3.1	2018-01-04	Implementation of LCR-1024. Mention relevant OSS requirements.	Tim Jenness
3.2	2018-02-09	Implementation of LCR-1214. Update Level 1, Level 2 and Level 3 nomenclature as defined in LPM-231. Shrink section Level 3 section and refer to Science Platform.	R. Gill, W. O'Mullane
3.3	2018-10-24	Implementation of LCR-1459. DM-12129: Adoption of nanojansky flux unit. DM-11247: Add additional alert packet contents to DPDD. DM-15566: DPDD incorrectly states "immediate" access to PPDB products. Updated document maintainer, curator and author list, added point estimates for photo-z and a few minor edits.	Ž. Ivezić, Leanne Guy
3.4	2018-07-29	Add DIAForcedSource table. Clarify handling of force photometry, Prompt vs. Data Release products distinction, other minor fixes. (LCR-1916: RFC-517, DM-10540, DM-15671, DM-16688, DM-15784)	C. Slater, E. Bellm

*Document curator:* Leanne Guy

*Document source location:* <https://github.com/lsst/LSE-163>

# Contents

<b>1 Introduction</b>	<b>1</b>
1.1 The Large Synoptic Survey Telescope . . . . .	1
1.2 General Image Processing Concepts for LSST . . . . .	2
1.3 Classes of LSST Data Products . . . . .	3
<b>2 General Considerations</b>	<b>5</b>
2.1 Estimator and Naming Conventions . . . . .	6
2.2 Image Characterization Data . . . . .	7
2.3 Fluxes and Magnitudes . . . . .	7
2.4 Uniqueness of IDs across database versions . . . . .	8
2.5 Repeatability of Queries . . . . .	8
<b>3 Prompt Data Products</b>	<b>10</b>
3.1 Overview . . . . .	10
3.2 Prompt Data Processing . . . . .	11
3.2.1 Difference Image Analysis . . . . .	11
3.2.2 Solar System Object Processing . . . . .	13
3.3 Prompt Catalogs . . . . .	14
3.3.1 DIASource Table . . . . .	15
3.3.2 DIAObject Table . . . . .	21
3.3.3 SSObject Table . . . . .	23
3.3.4 Precovery Measurements . . . . .	24
3.3.5 Image differencing during Data Release Production . . . . .	25
3.4 Prompt Image Products . . . . .	25
3.4.1 Visit Images . . . . .	25
3.4.2 Difference Images . . . . .	26
3.4.3 Image Differencing Templates . . . . .	26
3.5 Alerts to DIASources . . . . .	26
3.5.1 Information Contained in Each Alert . . . . .	26

3.5.2 Receiving and Filtering the Alerts . . . . .	27
<b>4 Data Release Data Products</b>	<b>29</b>
4.1 Overview . . . . .	29
4.2 Data Release Data Processing . . . . .	30
4.2.1 Object Characterization Measures . . . . .	32
4.2.2 Supporting Science Cases Requiring Full Posteriors . . . . .	34
4.2.3 Source Characterization . . . . .	35
4.2.4 Forced Photometry . . . . .	36
4.2.5 Crowded Field Photometry . . . . .	36
4.3 The Data Release Catalogs . . . . .	37
4.3.1 The Object Table . . . . .	37
4.3.2 Source Table . . . . .	42
4.3.3 ForcedSource Table . . . . .	44
4.4 Data Release Image Products . . . . .	45
4.4.1 Visit Images . . . . .	45
4.4.2 Calibration Data . . . . .	45
4.4.3 Coadded Images . . . . .	46
4.5 Data Release Availability and Retention Policies . . . . .	47
<b>5 User Generated Data Products and the Science Platform</b>	<b>49</b>
5.1 Migration of User Generated data products to Data Release products . . . . .	50
<b>6 Data Products for Special Programs</b>	<b>51</b>
<b>A Appendix: Conceptual Pipeline Design</b>	<b>54</b>

# Data Products Definition Document

## Preface

The purpose of this document is to describe the data products produced by the Large Synoptic Survey Telescope (LSST).

To a future LSST user, it should clarify what catalogs, image data, software, and services they can expect from LSST. To LSST builders, it provides direction on how to flow down the LSST System Requirements Document to system design, sizing, budget and schedule as they pertain to the data products.

Though under strict change control, this is a **living document**. LSST will undergo a period of construction and commissioning lasting no less than seven years, followed by a decade of survey operations. To ensure their continued scientific adequacy, the designs and plans for LSST Data Products will be periodically reviewed and updated.

# 1 Introduction

## 1.1 The Large Synoptic Survey Telescope

LSST will be a large, wide-field ground-based optical telescope system designed to obtain multiple images covering the sky that is visible from Cerro Pachón in Northern Chile. The current baseline design, with an 8.4m (6.7m effective) primary mirror, a  $9.6 \text{ deg}^2$  field of view, and a 3.2 Gigapixel camera, will allow about 10,000 square degrees of sky to be covered every night using pairs of 15-second exposures, with typical  $5\sigma$  depth for point sources of  $r \sim 24.5$  (AB). The system is designed to yield high image quality as well as superb astrometric and photometric accuracy. The total survey area will include  $\sim 30,000 \text{ deg}^2$  with  $\delta < +34.5^\circ$ , and will be imaged multiple times in six bands, *ugrizy*, covering the wavelength range 320–1050 nm. For a more detailed, but still concise, summary of LSST, please see the LSST Overview paper [12]<sup>1</sup>.

The project is scheduled to begin the regular survey operations at the start of next decade. About 90% of the observing time will be devoted to a deep-wide-fast survey mode which will uniformly observe a  $18,000 \text{ deg}^2$  region about 1000 times (summed over all six bands) during the anticipated 10 years of operations, and yield a coadded map to  $r \sim 27.5$ . These data will result in catalogs including over 38 billion stars and galaxies, that will serve the majority of the primary science programs. The remaining 10% of the observing time will be allocated to special projects such as a Very Deep and Fast time domain survey<sup>2</sup>.

LSST will be operated in fully automated survey mode. The images acquired by the LSST Camera will be processed by LSST Data Management software to a) detect and characterize imaged astrophysical sources and b) detect and characterize temporal changes in the LSST-observed universe. The results of that processing will be reduced images, catalogs of detected objects and the measurements of their properties, and prompt alerts to “events” – changes in astrophysical scenery discovered by differencing incoming images against older, deeper, images of the sky in the same direction (*templates*, see §3.4.3). Measurements will be internally and absolutely calibrated.

The *broad, high-level*, requirements for LSST Data Products are given by the *LSST Science Requirements Document* (SRD; LPM-17). This document lays out the *specifics* of what the data

<sup>1</sup><http://ls.st/2m9>

<sup>2</sup>Informally known as “Deep Drilling Fields”.



products will comprise, how those data will be generated, and when. It serves to inform the flow-down from the LSST [SRD](#) through the *LSST System Requirements Document* (the [LSR](#); LSE-29) and the *LSST Observatory System Specifications* ([OSS](#); LSE-30), to the *LSST Data Management System Requirements* ([DMSR](#); LSE-61), the UML model (LDM-133), and the database schema (LDM-153). The [OSS](#) explicitly ties this document to the requirements flow down through requirements OSS-REQ-0126 Prompt, OSS-REQ-0133 Data Release, OSS-REQ-0139 User Generated, OSS-REQ-0391 (general conventions), and OSS-REQ-0392 (special programs). Throughout this document margin notes are used to provide linkage to formal LSST requirements and parameters associated with the nearby text.

## 1.2 General Image Processing Concepts for LSST

A raw image (baselined as a pair of successive 15-second exposures, called snaps), delivered by the LSST camera is processed by the Single Frame Processing Pipeline to produce a single-visit image with, at least conceptually, counts proportional to photon flux entering the telescope pupil (in reality, there are many additional optical, pixel and bandpass effects, including random counting noise and various subtle systematic errors, that are treated during subsequent processing). This single-visit image processed by the pipeline is called a “Processed Visit Image” and its main data structures include counts, their variance and various masks, all defined on per pixel basis. These single-visit images are used downstream to produce coadded and difference images. The rest of the processing is essentially a model-based interpretation of imaging observations that includes numerous astrophysical and other assumptions.

The basic interpretation model assumes a sum of discrete (but possibly overlapping) sources and a relatively smooth background. The background has a different spectral energy distribution than discrete sources, and it can display both spatial gradients and temporal changes. Discrete sources can vary in brightness and position. The motion can be slow or fast (between two successive observations, less or more motion than about the seeing disk size), and naturally separates stars with proper motions and trigonometric parallax from moving objects in the Solar System. Some objects that vary in brightness can be detectable for only a short period of time (e.g., supernovae and other cosmic explosions).

The image interpretation model separates time-independent model component from a temporally changing component (“DC” and “AC”, respectively). Discrete DC sources are *not* operationally nor astrophysically associated with discrete AC sources even when they are spatially coincident.



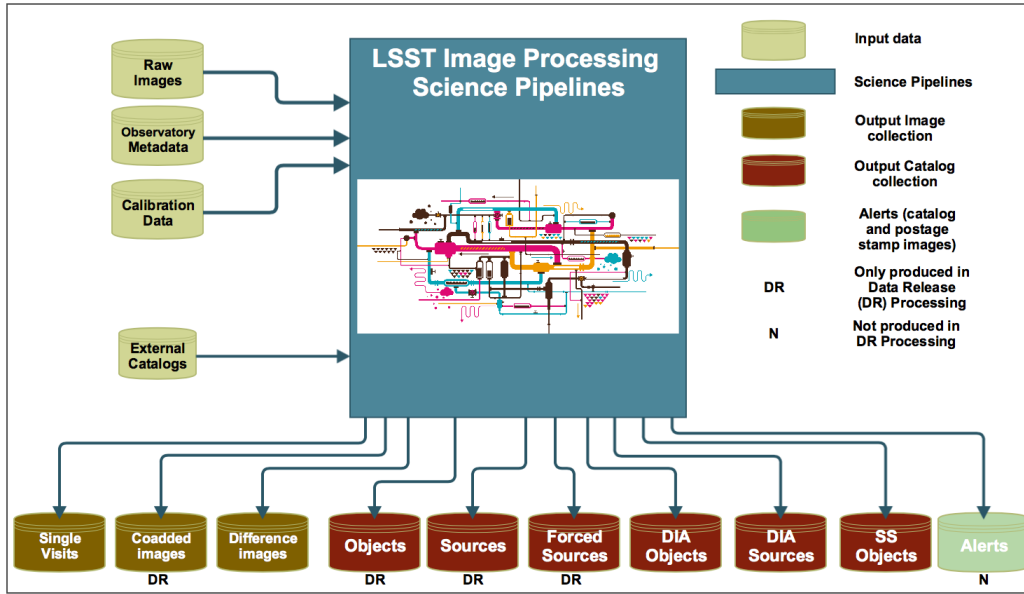


FIGURE 1: Overview of data products produced by LSST Imaging Processing Science Pipelines.

Images of discrete objects are modeled using two models (§4.2.1). A two-component galaxy model includes a linear combination of bulge and disk, with their radial intensity variation described using Sersic profiles. Stars are modeled using a moving point source model with its parallax motion superposed on a linear proper motion. This model shares motion parameters across the six bandpasses and assumes constant flux in each band, and thus includes 11 free parameters. Both galaxy and stellar models are fit to all objects, except for fast-moving objects (the Solar System objects), which are treated separately. Discrete objects detected in *difference* images will be modeled using three models: a point source model, a trailed point source model, and a point source dipole model.

### 1.3 Classes of LSST Data Products

The main LSST data products are illustrated in Figure 1 (see Appendix for a conceptual design of pipelines which will produce these data products). LSST Data Management will perform image analysis on two different timescales, with two corresponding categories of output data products<sup>3</sup>:

1. **Prompt Processing**, which is performed on a nightly or daily basis and results in **Prompt**

<sup>3</sup>Note that prior to 2018 data products were referred to as Level 1, Level 2, and Level 3; this nomenclature was updated in 2018 to Prompt Products, Data Release Products and User Generated Products respectively [LPM-231].

**Data Products.** The goal of this processing is the detection and characterization of astrophysical phenomena that are revealed by their time-dependent nature. The detection of supernovae superimposed on bright extended galaxies is an example of this analysis. Prompt products will include single visit images, difference images, catalogs of sources detected in difference images (DIASources), astrophysical objects<sup>4</sup> these are associated to (DIAObjects), and Solar System objects (SSObjects<sup>5</sup>). The catalogs will be entered into the **Prompt Products database** and made available in near real time. Notifications (“alerts”) about new DIASources will be issued using community-accepted standards<sup>6</sup> within 60 seconds of observation. Prompt data products are discussed in § 3.

2. **Data Release Processing**, which is performed annually<sup>7</sup> and produces **Data Release** data products. These processing campaigns use all data collected by the survey to date in order to perform a comprehensive analysis, including measurement of both faint static objects through the construction of deep coadds, and light curve characterization through image differencing across all available epochs. The data products produced will include the calibrated single-epoch images, deep coadds, catalogs of characterized Objects (detected on deep coadds as well as individual visits<sup>8</sup>), Sources<sup>9</sup> (detections and measurements on individual visits), and ForcedSources (constrained measurement of flux on individual visits). It will also include difference image analysis tables similar to those produced during Prompt Processing (see §3.3.5). In contrast to the Prompt Products database, which is updated continuously during observing, the Data Release database is static and will not change after release. Data Release data products are discussed in § 4.

The two processing timescales are driven by differing scientific requirements. Changes in flux or position of objects may need to be immediately followed up, lest interesting information be lost. Thus the primary results of analysis of difference images – discovered and characterized

<sup>4</sup>The LSST has adopted the nomenclature by which single-epoch detections of astrophysical *objects* are called *sources*. The reader is cautioned that this nomenclature is not universal: some surveys call *detections* what LSST calls *sources*, and use the term *sources* for what LSST calls *objects*.

<sup>5</sup>SSObjects used to be called “Moving Objects” in previous versions of the LSST Data Products baseline. The name is potentially confusing as high-proper motion stars are moving objects as well. A more accurate distinction is the one between objects *inside* and *outside* of the Solar System.

<sup>6</sup>For example, VOEvent, see <http://ls.st/4tt>

<sup>7</sup>Except for the first two data releases, which will be created six months apart.

<sup>8</sup>The LSST takes two exposures per pointing, nominally 15 seconds in duration each, called *snaps*. For the purpose of data processing, that pair of exposures will typically be coadded and treated as a single exposure, called a *visit*.

<sup>9</sup>When written in bold monospace type (i.e., \tt), Objects and Sources refer to objects and sources detected and measured as a part of Data Release processing.

DIASources – generally need to be broadcast as *event alerts* within 60 seconds of end of visit acquisition. The analysis of science (direct) images is less time sensitive, and will be done as a part of annual data release process.

OTT1

DMS-REQ-0004

Recognizing the diversity of astronomical community needs, and the need for specialized processing not part of the automatically generated Prompt and Data Release products, LSST plans to devote 10% of its data management system capabilities to enabling the creation, use, and federation of **User Generated** data products. The **Science Platform** will enable science cases that greatly benefit from co-location of user processing and/or data within the LSST Archive Center. The high-level requirement for this is established in § 3.5 of the LSST [SRD](#). Some details are discussed in § 5 of this document.

Finally, LSST Survey Specifications (§ 3.4 of LSST [SRD](#)) prescribe that 90% of LSST observing time be spent in the so-called “universal cadence” mode of surveying the sky. These observations will result in Prompt and Data Release data products discussed above. The remaining 10% of observing time will be devoted to **special programs**, designed to obtain improved coverage of interesting regions of observational parameter space. Examples include very deep ( $r \sim 26$ , per exposure) observations, observations with very short revisit times ( $\sim 1$  minute), and observations of “special” regions such as the Ecliptic, Galactic plane, and the Large and Small Magellanic Clouds. The data products for these programs will be generated using the same processing software and hardware and possess the general characteristics of Prompt and Data Release data products, but may be performed on a somewhat different cadence. They will be discussed in § 6.

## 2 General Considerations

Most LSST data products will consist of images and/or catalogs. The catalogs will be stored and offered to the users as *relational databases* which they will be able to query. This approach was shown to work well by prior large surveys, for example the Sloan Digital Sky Survey (SDSS).

Catalogs may be stored in different databases to meet the operational requirements particular to each dataset. The Prompt Products database will hold catalogs from Prompt Processing, to enable rapid access to recent measurements. Data Release “universal cadence” catalogs will be stored in a Data Release database. The products for special programs may be stored in many different databases, depending on the nature of the program.

Nevertheless, all these databases will follow certain naming and other conventions. We discuss these in the subsections to follow.

## 2.1 Estimator and Naming Conventions

For all catalogs data, we will employ a convention where estimates of standard errors have the suffix `Err`, while the estimates of inherent widths of distribution (or functions in general) have the suffix `Sigma`<sup>10</sup>. The latter are defined as the square roots of the second moment about the quoted value of the quantity at hand.

DMS-REQ-0333

Unless noted otherwise, maximum likelihood values (called likelihood for simplicity) will be quoted for all fitted parameters (measurements). Together with covariances, these let the end-user apply whatever prior they deem appropriate when computing posteriors<sup>11</sup>. Where appropriate, multiple independent samples from the likelihood may be provided to characterize departures from Gaussianity.

We will provide values of log likelihood, the  $\chi^2$  for the fitted parameters, and the number of data points used in the fit. Database functions (or precomputed columns) will be provided for frequently used combinations of these quantities (e.g.,  $\chi^2/dof$ ). These can be used to assess the model fit quality. Note that, *if the errors of measured quantities are normally distributed*, the likelihood is related to the  $\chi^2$  as:

DMS-REQ-0331

$$L = \left( \prod_k \frac{1}{\sigma_k \sqrt{2\pi}} \right) \exp \left[ -\frac{\chi^2}{2} \right] \quad (1)$$

where the index  $k$  runs over all data points included in the fit. For completeness,  $\chi^2$  is defined as:

$$\chi^2 = \sum_k \left( \frac{x_k - \bar{x}}{\sigma_k} \right)^2, \quad (2)$$

where  $\bar{x}$  is the mean value of  $x_k$ .

For fluxes, we recognize that a substantial fraction of astronomers will just want the posteriors marginalized over all other parameters, trusting the LSST experts to select an appropriate

<sup>10</sup>Given  $N$  measurements, standard errors scale as  $N^{-1/2}$ , while widths remain constant.

<sup>11</sup>There's a tacit assumption that a Gaussian is a reasonably good description of the likelihood surface around the ML peak.

prior<sup>12</sup>. For example, this is nearly always the case when constructing color-color or color-magnitude diagrams. We will support these use cases by providing additional pre-computed columns, taking care to name them appropriately so as to minimize accidental incorrect usage. For example, a column named gFlux may be the expectation value of the g-band flux, while gFluxML may represent the maximum likelihood value.

DMS-REQ-0331

## 2.2 Image Characterization Data

Raw images will be processed to remove instrumental signature and characterize their properties, including backgrounds (both due to night sky and astrophysical), the point spread function and its variation, photometric zero-point model, and the world coordinate system (WCS).

DMS-REQ-0069

DMS-REQ-0327

DMS-REQ-0070

DMS-REQ-0029

DMS-REQ-0030

That characterization is crucial for deriving LSST catalogs and understanding the images. It will be kept and made available to the users. The exact format used to store these (meta)data will depend on the final adopted algorithm in consultation with the scientific community to ensure the formats in which these data are served are maximally useful.

DMS-REQ-0328

DMS-REQ-0072

Each processed image<sup>13</sup>, including the coadds, will record information on pixel variance (the “variance plane”), as well as per-pixel masks (the “mask plane”). These will allow the users to determine the validity and usefulness of each pixel in estimating the flux density recorded in that area of the sky.

This information will be per-pixel, and potentially unwieldy to use for certain science cases. We plan to investigate approximate schemes for storing masks based on geometry (e.g., similar to Mangle or STOMP), *in addition* to storing them on a per pixel basis.

DMS-REQ-0326

## 2.3 Fluxes and Magnitudes

DMS-REQ-0043

Because flux measurements on difference images (Prompt data products; § 3) are performed against a template and thus represent a flux difference, the measured flux of a source on the difference image can be negative. The flux can also go negative for faint sources in the presence of noise. Negative fluxes cannot be stored as (Pogson) magnitudes; log of a negative number is undefined. We therefore prefer to store fluxes, rather than magnitudes, in

<sup>12</sup>It's likely that most cases will require just the expectation value alone.

<sup>13</sup>It is also frequently referred to as *calibrated exposure*, from the Butler product type of calexp.

database tables<sup>14</sup>.

DMS-REQ-0347

LSST fluxes are quoted in units of nanojansky<sup>15</sup> ( $1 \text{ nJy} = 10^{-35} \text{ Wm}^{-2}\text{Hz}^{-1}$ ). We will provide columns with flux and flux errors as well as estimates of the relative and absolute photometric calibration errors, and the normalized system response (for details see Section 3.3.4 in the LSST Science Requirements Document).

We acknowledge that the large majority of users will want to work with magnitudes. For convenience, we plan in addition to provide columns with (Pogson) magnitudes and magnitude errors<sup>16</sup>, where values with negative flux will evaluate to NULL.

## 2.4 Uniqueness of IDs across database versions

DMS-REQ-0292

To reduce the likelihood for confusion, all IDs shall be unique across databases and database versions, other than those corresponding to uniquely identifiable entities (i.e., IDs of exposures).

For example, DR4 and DR5 (or any other) release will share no identical Object, Source, DIA-Object or DIASource IDs (see § 3 and 4 for the definitions of Objects, DIAObjects, etc.).

## 2.5 Repeatability of Queries

DMS-REQ-0291

We require that queries executed at a known point in time against any LSST-delivered database be repeatable at a later date. This promotes the reproducibility of science derived from LSST data. It is of special importance for Prompt product catalogs (§ 3) that will change on a nightly basis as new time domain data is being processed and added to the catalogs.

The exact implementation of this requirement is left to the LSST Data Management database team. One possibility may be to make the key tables (nearly) append-only, with each row having two timestamps – createdTai and deletedTai, so that queries may be limited by a WHERE clause:

```
SELECT * FROM DIASource WHERE 'YYYY-MM-DD-HH-mm-SS'
```

<sup>14</sup>This is a good idea in general. E.g., given multi-epoch observations, one should always be averaging fluxes, rather than magnitudes.

<sup>15</sup>For details, please see LSST Document-27758.

<sup>16</sup>These will most likely be implemented as “virtual” or “computed” columns.

**BETWEEN** createdTAI **and** deletedTAI

or, more generally:

```
SELECT * FROM DIASource WHERE 'data is valid as of YYYY-MM-DD'
```

A perhaps less error-prone alternative, if technically feasible, may be to provide multiple virtual databases that the user would access as:

```
CONNECT lsst-dr5-yyyy-mm-dd SELECT * FROM DIASource
```

The latter method would probably be limited to nightly granularity, unless there's a mechanism to create virtual databases/views on-demand.



### 3 Prompt Data Products

#### 3.1 Overview

Prompt data products are the result of nightly processing. These data products are single visit images, difference images, and the results of difference image analysis (DIA; §3.2.1). DIA outputs consist of the sources detected in difference images (DIASources), astrophysical objects that these are associated to (DIAObjects), identified Solar System objects<sup>17</sup> (SSObject). Various metadata products are also produced during nightly processing and made available to users.

DIASources are sources detected on difference images (those with the signal-to-noise ratio  $S/N > transSNR$  after correlation with the PSF profile, with  $transSNR$  defined in the [SRD](#) and presently set to 5). They represent changes in flux with respect to a deep template. Detections with high probability of being instrumental non-astrophysical artifacts may be excluded. Physically, a DIASource may be an observation of new astrophysical object that was not present at that position in the template image (for example, an asteroid), or an observation of flux change in an existing source (for example, a variable star). Their flux can be negative (eg., if a source present in the template image reduced its brightness, or moved away). Their shape can be complex (eg., trailed, for a source with proper motion approaching  $\sim$ deg/day, or “dipole-like”, if an object’s observed position exhibits an offset – true or apparent – compared to its position on the template). Some DIASources will be caused by background fluctuations; with  $transSNR = 5$ , we expect about one such false positive per CCD (of the order 200,000 per typical night). The expected number of false positives due to background fluctuations is a very strong function of adopted  $transSNR$ : a change of  $transSNR$  by 0.5 results in a variation of an order of magnitude, and a change of  $transSNR$  by unity changes the number of false positives by about two orders of magnitude.

$transSNR$

Clusters of DIASources detected on visits taken at different times are associated with either a DIAObject or an SSObject, to represent the underlying astrophysical phenomenon. The association can be made in two different ways: by assuming the underlying phenomenon is an object within the Solar System moving on an orbit around the Sun<sup>18</sup>, or by assuming it

DMS-REQ-0285

<sup>17</sup>The [SRD](#) considers Solar System object orbit catalog to be a Data Release data product (LSST [SRD](#), Sec 3.5). Nevertheless, to successfully differentiate between apparitions of known Solar System objects and other types DIASources we consider it functionally a part of Prompt products.

<sup>18</sup>We don’t plan to fit for motion around other Solar System bodies; eg., identifying new satellites of Jupiter is left to the community.

to be distant enough to only exhibit small parallactic and proper motion<sup>19</sup>. The latter type of association is performed during difference image analysis right after the image has been acquired. The former is done at daytime by the Moving Objects Processing Software (MOPS), unless the DIASource is an apparition of an already known SSObject. In that case, it will be flagged as such during difference image analysis.

DMS-REQ-0089

DMS-REQ-0002

At the end of the difference image analysis of each visit, we will issue time domain event alerts for all newly detected DIASources<sup>20</sup>.

## 3.2 Prompt Data Processing

### 3.2.1 Difference Image Analysis

The following is a high-level description of steps which will occur during regular *nightly* difference image analysis (see Figures 3 and 5):

1. A visit is acquired and reduced to a single *Processed Visit Image* (cosmic ray rejection, instrumental signature removal<sup>21</sup>, combining of snaps, etc.).
2. The Processed Visit Image is differenced against the appropriate template and DIASources are detected. If necessary, deblending will be performed at this stage. Both the parent blend and the deblended children will be measured and stored as DIASources (see next item), but only the children will be matched against DIAObjects and alerted on. Deblended objects will be flagged as such.
3. The flux and shape<sup>22</sup> of the DIASource are measured on the difference image. PSF photometry is performed on the Processed Visit Image at the position of the DIASource to obtain a measure of the total flux.
4. The Prompt Products database (see §3.3) is searched for a DIAObject or an SSObject with

DMS-REQ-0069

DMS-REQ-0010

DMS-REQ-0269

<sup>19</sup>Where 'small' is small enough to unambiguously positionally associate together individual apparitions of the object.

<sup>20</sup>For observations on the Ecliptic near the opposition Solar System objects will dominate the DIASource counts and (until they're recognized as such) overwhelm the explosive transient signal. It will therefore be advantageous to quickly identify the majority of Solar System objects early in the survey.

<sup>21</sup>Eg., subtraction of bias and dark frames, flat fielding, bad pixel/column interpolation, etc.

<sup>22</sup>The "shape" in this context consists of weighted 2<sup>nd</sup> moments, as well as fits to a trailed source model and a dipole model.

which to positionally associate the newly discovered DIASource<sup>23</sup>. If no match is found, a new DIAObject is created and the observed DIASource is associated to it.

DMS-REQ-0273

DMS-REQ-0271

DMS-REQ-0285

5. If the DIASource has been associated with an SSObject (a known Solar System object), it will be flagged as such and an alert will be issued. Further processing will occur in daytime (see section 3.2.2).

DMS-REQ-0274

6. Otherwise, the associated DIAObject measurements will be updated with new data collected during previous 12 months. Hence, the computed parameters for DIAObjects have a “memory” of past data that does not extend beyond this cutoff<sup>24</sup>. All affected columns will be recomputed, including proper motions, centroids, light curves, etc.

DMS-REQ-0319

diaCharacterization-  
Cutoff

7. To aid in rapid prioritization of new DIAObjects in the latency interval before the precov-  
ery forced photometry is run (see below), a table with the median noise in the difference  
image per visit is queried. For each visit in the last twelve months at the position of the  
DIAObject, if there are no DIASource or DIAForcedSource records for that visit, the time  
of that visit, the filter, and the difference image noise are included in the alert packet.  
These data allow computation of appropriate upper limits in the difference image light  
curve.

L1PublicT

8. The Data Release database<sup>25</sup> is searched for the three nearest stars and three near-  
est galaxies to the DIAObject in Objects out to some maximum radius. The IDs of these  
nearest-neighbor Objects are recorded in the DIAObject record and provided in the com-  
plete DIAObject record issued with the issued event alert (see below).

diaNearbyObjMaxS-  
tar

diaNearbyObjMax-  
Galaxy

diaNearbyObjRadius

DMS-REQ-0271

DMS-REQ-0002

9. An alert is issued that includes: the timestamp of when this database has been queried  
to issue this alert, the DIASource ID, the complete SSObject or DIAObject record<sup>26</sup>, *includ-  
ing all* DIASources and DIAForcedSources from the last 12 months that are linked with the  
SSObject or DIAObject. The science content associated with the Data Release database  
Objects will not be included. See Section 3.5 for a more complete enumeration.

diaCharacterization-  
Cutoff

DMS-REQ-0274

10. For all DIAObjects overlapping the field of view, including those that have an associated  
new DIASource from this visit, forced photometry will be performed on the difference im-

<sup>23</sup>The association algorithm will guarantee that a DIASource is associated with not more than one existing DIAObject or SSObject. The algorithm will take into account the parallax and proper (or Keplerian) motions, as well as the errors in estimated positions of DIAObject, SSObject, and DIASource, to find the maximally likely match. Multiple DIASources in the same visit will not be matched to the same DIAObject.

<sup>24</sup>This restriction is removed when Prompt processing is rerun during Data Release production, see § 3.3.5.

<sup>25</sup>Data Release database is a database resulting from annual data release processing. See § 4 for details.

<sup>26</sup>We guarantee that a receiver will always be able to regenerate the alert contents at any later date using the included timestamps and metadata.

age (point source photometry only). Those measurements will be stored as DIAForcedSources. No alerts will be issued for these DIAForcedSources, but the DIAForcedSource measurements will be included in any future alerts triggered by a new DIASource at that location.

DMS-REQ-0317

11. Within 24 hours of discovery, *precovery* PSF forced photometry will be performed on any difference image overlapping the position of new DIAObjects taken within the past 30 days, and added to the DIAForcedSource table. Alerts will not be issued with precovery photometry information but the resulting DIAForcedSource measurements will be included in future alerts from this DIAObject.

L1PublicT

precoveryWindow

DMS-REQ-0287

In addition to the processing described above, a smaller sample of sources detected on difference images *below* the nominal *transSNR* = 5 threshold will be measured and stored, in order to enable monitoring of difference image analysis quality.

transSNR

DMS-REQ-0270

Also, the system will have the ability to measure and alert on a limited<sup>27</sup> number of sources detected below the nominal threshold for which additional criteria are satisfied. For example, a *transSNR* = 3 source detection near a gravitational keyhole<sup>28</sup> may be highly significant in assessing the danger posed by a potentially hazardous asteroid. The initial set of criteria will be defined by the start of LSST operations.

### 3.2.2 Solar System Object Processing

The following will occur during regular Solar System object processing (in daytime<sup>29</sup>, after a night of observing; see Figure 6) :

DMS-REQ-0004

DMS-REQ-0089

1. The orbits and physical properties of all SSObjects re-observed on the previous night are recomputed. External orbit catalogs (or observations) are also used to improve orbit estimates. Updated data are entered to the SSObjects table.
2. All DIASources detected on the previous night, that have *not* been matched at a high

DMS-REQ-0288

DMS-REQ-0273

<sup>27</sup>It will be sized for no less than ~10% of average DIASource per visit rate.

<sup>28</sup> A gravitational keyhole is a region of space where Earth's gravity would modify the orbit of a passing asteroid such that the asteroid would collide with the Earth in the future.

<sup>29</sup>Note that there is *no strict bound on when daytime Solar System processing must finish*, just that, averaged over some reasonable timescale (eg., a month), a night's worth of observing is processed within 24 hours. Nights rich in moving objects may take longer to process, while nights with less will finish more quickly. In other words, the requirement is on *throughput*, not latency.

confidence level to a known Object, DIAObject, SSObject, or an artifact, are analyzed for potential pairs, forming *tracklets*.

3. The collection of tracklets collected over the past 30 days<sup>30</sup> is searched for subsets forming *tracks* consistent with being on the same Keplerian orbit around the Sun.
4. For those that are, an orbit is fitted and a new SSObject table entry created. DIASource records are updated to point to the new SSObject record. DIAObjects “orphaned” by this unlinking are marked as expired (as per Section 2.5).
5. Preccovery linking is attempted for all SSObjects whose orbits were updated in this process. Where successful, SSObjects (orbits) are recomputed as needed.

DMS-REQ-0286

### 3.3 Prompt Catalogs

The alert processing design relies on the Prompt Products database that contains the objects and sources detected on difference images. At the very least<sup>31</sup>, this database will have tables of DIASources, DIAObjects, and SSObjects, populated in the course of nightly and daily difference image and Solar System object association. As these get updated and added to, their updated contents becomes visible (query-able) to users within 24 hours of the corresponding observation times. In the case of SSObjects, this means 24 hours after orbits have been determined or updated.

DMS-REQ-0269

DMS-REQ-0271

DMS-REQ-0273

L1PublicT

DMS-REQ-0312

This database is *only loosely coupled to the Data Release database*. All of the coupling is through positional matches between the DIAObjects entries in the Prompt Products database and the Objects in the Data Release database. There is no direct DIASource-to-Object match: in general, a time-domain object is not necessarily the same astrophysical object as a static-sky object, even if the two are positionally coincident (eg. an asteroid overlapping a galaxy). Therefore, adopted data model emphasizes that *having a DIASource be positionally coincident with an Object does not imply it is physically related to it*. Absent other information, the least presumptuous data model relationship is one of *positional association*, not *physical identity*.

This may seem odd at first: for example, in a simple case of a variable star, matching individual DIASources to Objects is exactly what an astronomer would want. That approach,

<sup>30</sup>The exact time period is a design and computational question discussed in LDM-156.

<sup>31</sup>It will also contain exposure and visit metadata, MOPS-specific tables, etc. These are either standard/uncontroversial, implementation-dependent, or less directly relevant for science and therefore not discussed in this document.

however, fails in the following scenarios:

- *A supernova in a galaxy.* The matched object in the Object table will be the galaxy, which is a distinct astrophysical object. We want to keep the information related to the supernova (eg., colors, the light curve) separate from those measurements for the galaxy.
- *An asteroid occulting a star.* If associated with the star on first apparition, the association would need to be dissolved when the source is recognized as an asteroid (perhaps even as early as a day later).
- *A supernova on top of a pair of blended galaxies.* It is not clear in general to which galaxy this DIASource would “belong”. That in itself is a research question.

DIASource-to-Object matches can still be emulated via a two-step relation (DIASource-DIA-Object-Object). For ease of use, views or pre-built table with these matches will be offered to the end-users.

DMS-REQ-0324

In the sections to follow, we present the *conceptual schemas* for the most important Prompt Products database tables. These convey *what* data will be recorded in each table, rather than the details of *how*. For example, columns whose type is an array (eg., `radec`) may be expanded to one table column per element of the array (eg., `ra`, `dec1`) once this schema is translated to SQL<sup>32</sup>. Secondly, the tables to be presented are largely normalized (i.e., contain no redundant information). For example, since the band of observation can be found by joining a DIA-Source table to the table with exposure metadata, there’s no column named `band` in the DIA-Source table. In the as-built database, the views presented to the users will be appropriately denormalized for ease of use.

### 3.3.1 DIASource Table

This is a table of sources detected at  $transSNR \geq 5$  on difference images<sup>33</sup> (DIASources). On average, the LSST SRD expects up to ~10,000 astrophysical DIASources per visit (~10M per night; 100,000 per deg<sup>2</sup> of the sky per hour).

transSNR  
LSR-REQ-0101

transN

<sup>32</sup>The SQL realization of this schema is defined in the `cat` package and documented in LDM-153 and can be browsed at <http://ls.st/8g4>

<sup>33</sup>This requirement is specified in the LSST SRD.

Some  $transSNR \geq 5$  sources will not be caused by observed astrophysical phenomena, but by artifacts (bad columns, diffraction spikes, etc.). The difference image analysis software will attempt to identify and flag these as such.

Unless noted otherwise, all DIASource quantities (fluxes, centroids, etc.) are measured on the difference image.

DMS-REQ-0269

Table 1: DIASource Table

Name	Type	Unit	Description
diaSourceId	uint64		Unique source identifier
ccdVisitId	uint64		ID of CCD and visit where this source was measured
diaObjectId	uint64		ID of the DIAObject this source was associated with, if any.
ssObjectId	uint64		ID of the SSObject this source has been linked to, if any.
parentDiaSourceId	uint64		ID of the parent DIASource this object has been deblended from, if any.
midPointTai	double	time	Time of mid-exposure for this DIASource <sup>34</sup> .
radec	double[2]	degrees	Centroid, $(\alpha, \delta)$ <sup>35</sup> .
radecCov	float[3]	various	radec covariance matrix.
xy	float[2]	pixels	Column and row of the centroid.
xyCov	float[3]	various	Centroid covariance matrix.
apFlux	float	nJy <sup>36</sup>	Calibrated aperture flux. Note that this actually measures the flux <i>difference</i> between the template and the visit image.
apFluxErr	float	nJy	Estimated uncertainty of apFlux.

*Continued on next page*

<sup>34</sup>The visit mid-exposure time generally depends on the position of the source relative to the shutter blade motion trajectory.

<sup>35</sup>The astrometric reference frame will be chosen closer to start of operations.

<sup>36</sup>LSST fluxes are reported in nanojansky (1 nJy =  $10^{-35}$  Wm<sup>-2</sup>Hz<sup>-1</sup>). See §2.3 and LSST Document-27758 for details.



Table 1: DIASource Table

Name	Type	Unit	Description
SNR	float		The signal-to-noise ratio at which this source was detected in the difference image. <sup>37</sup>
psFlux	float	nJy	Calibrated flux for point source model. Note this actually measures the flux <i>difference</i> between the template and the visit image.
psFluxErr	float	nJy	Estimated uncertainty of psFlux.
psRadec	double[2]	degrees	Centroid for point source model.
psCov	float[6]	various	Covariance matrix for point source model parameters.
psLnL	float		Natural <i>log</i> likelihood of the observed data given the point source model.
psChi2	float		$\chi^2$ statistic of the model fit.
psNdata	int		The number of data points (pixels) used to fit the model.
trailFlux	float	nJy	Calibrated flux for a trailed source model <sup>38,39</sup> . Note this actually measures the flux <i>difference</i> between the template and the visit image.
trailRadec	double[2]	degrees	Centroid for trailed source model.
trailLength	float	arcsec	Maximum likelihood fit of trail length <sup>40,41</sup> .

*Continued on next page*

<sup>37</sup>This is not necessarily the same as apFlux/apFluxErr, as the flux measurement algorithm may be more accurate than the detection algorithm.

<sup>38</sup>A *Trailed Source Model* attempts to fit a (PSF-convolved) model of a point source that was trailed by a certain amount in some direction (taking into account the two-snap nature of the visit, which may lead to a dip in flux around the mid-point of the trail). Roughly, it's a fit to a PSF-convolved line. The primary use case is to characterize fast-moving Solar System objects.

<sup>39</sup>This model does not fit for the *direction* of motion; to recover it, we would need to fit the model to separately to individual snaps of a visit. This adds to system complexity, and is not clearly justified by increased MOPS performance given the added information.

<sup>40</sup>Note that we'll likely measure trailRow and trailCol, and transform to trailLength/trailAngle (or trailRa/trailDec) for storage in the database. A stretch goal is to retain both.

<sup>41</sup>TBD: Do we need a separate trailCentroid? It's unlikely that we do, but one may wish to prove it.

Table 1: DIASource Table

Name	Type	Unit	Description
trailAngle	float	degrees	Maximum likelihood fit of the angle between the meridian through the centroid and the trail direction (bearing, direction of motion).
trailCov	float[15]	various	Covariance matrix of trailed source model parameters.
trailLnL	float		Natural <i>log</i> likelihood of the observed data given the trailed source model.
trailChi2	float		$\chi^2$ statistic of the model fit.
trailNdata	int		The number of data points (pixels) used to fit the model.
dipMeanFlux	float	nJy	Maximum likelihood value for the mean absolute flux of the two lobes for a dipole model <sup>42</sup> .
dipFluxDiff	float	nJy	Maximum likelihood value for the difference of absolute fluxes of the two lobes for a dipole model.
dipRadec	double[2]	degrees	Centroid for dipole model.
dipLength	float	arcsec	Maximum likelihood value for the lobe separation in dipole model.
dipAngle	float	degrees	Maximum likelihood fit of the angle between the meridian through the centroid and the dipole direction (bearing, from negative to positive lobe).
dipCov	float[21]	various	Covariance matrix of dipole model parameters.
dipLnL	float		Natural <i>log</i> likelihood of the observed data given the dipole source model.
dipChi2	float		$\chi^2$ statistic of the model fit.

*Continued on next page*

<sup>42</sup>A *Dipole Model* attempts to fit a (PSF-convolved) model of two point sources, with fluxes of opposite signs, separated by a certain amount in some direction. The primary use case is to characterize moving stars and problems with image differencing (e.g., due to astrometric offsets).

Table 1: DIASource Table

Name	Type	Unit	Description
dipNdata	int		The number of data points (pixels) used to fit the model.
totFlux	float	nJy	Calibrated flux for point source model measured on the visit image centered at the centroid measured on the difference image (forced photometry flux)
totFluxErr	float	nJy	Estimated uncertainty of totFlux.
diffFlux	float	nJy	Calibrated flux for point source model centered on radec but measured on the difference of snaps comprising this visit <sup>43</sup> .
diffFluxErr	float	nJy	Estimated uncertainty of diffFlux.
fpBkgd	float	nJy/arcsec <sup>2</sup>	Estimated background at the position (centroid) of the object in the template image.
fpBkgdErr	float	nJy/arcsec <sup>2</sup>	Estimated uncertainty of fpBkgd.
lxx	float	arcsec <sup>2</sup>	Adaptive second moment of the source intensity. See Bernstein & Jarvis [2] for detailed discussion of all adaptive-moment related quantities <sup>44</sup> .
lyy	float	arcsec <sup>2</sup>	Adaptive second moment of the source intensity.
lxy	float	arcsec <sup>2</sup>	Adaptive second moment of the source intensity.
lcov	float[6]	arcsec <sup>4</sup>	Ixx, Iyy, Ixy covariance matrix.
lxxPSF	float	arcsec <sup>2</sup>	Adaptive second moment for the PSF.
lyyPSF	float	arcsec <sup>2</sup>	Adaptive second moment for the PSF.
lxyPSF	float	arcsec <sup>2</sup>	Adaptive second moment for the PSF.

*Continued on next page*

<sup>43</sup>This flux can be used to detect sources changing on timescales comparable to snap exposure length (~15 sec).

<sup>44</sup>Or <http://ls.st/5f4> for a brief summary.

Table 1: DIASource Table

Name	Type	Unit	Description
extendedness	float		A measure of extendedness, computed using a combination of available moments, or from a likelihood ratio of point/trailed source models (exact algorithm TBD). <i>extendedness</i> = 1 implies a high degree of confidence that the source is extended. <i>extendedness</i> = 0 implies a high degree of confidence that the source is point-like.
spuriousness	float		A measure of spuriousness, computed using information <sup>45</sup> from the source and image characterization, as well as the information on the Telescope and Camera system (e.g., ghost maps, defect maps, etc.).
flags	bit[64]	bit	Various useful flags.

Table 2: DIAForcedSource Table

Name	Type	Unit	Description
diaForcedSourceId	uint64		Unique source identifier
ccdVisitId	uint64		ID of CCD and visit where this source was measured
diaObjectId	uint64		ID of the DIAObject this forced photometry was seeded by.
midPointTai	double	time	Time of mid-exposure for this DIA-ForcedSource.

*Continued on next page*

<sup>45</sup>The computation of spuriousness will be “prior free” to the extent possible and not use any information about the astrophysical neighborhood of the source, whether it has been previously observed or not, etc. The intent is to avoid introducing a bias against unusual sources or sources discovered in unusual environments.

Table 2: DIAForcedSource Table

Name	Type	Unit	Description
psFlux	float	nJy	Calibrated flux for point source model. Note this actually measures the flux <i>difference</i> between the template and the visit image.
psFluxErr	float	nJy	Estimated uncertainty of psFlux.
totFlux	float	nJy	Calibrated flux for point source model measured on the visit image centered at the DIAObject centroid.
totFluxErr	float	nJy	Estimated uncertainty of totFlux.

Some fast-moving, trailed, sources may be due to passages of nearby asteroids. Their trails may exhibit significant curvature. While we do not measure the curvature directly, it can be inferred by examining the length of the trail, the trailed model covariance matrices, and the adaptive shape measures. Once curvature is suspected, the users may fit curved trail models to the cutout provided with the alert.

### 3.3.2 DIAObject Table

Table 3: DIAObject Table

Name	Type	Unit	Description
diaObjectId	uint64		Unique identifier.
radec	double[2]	degrees	$(\alpha, \delta)$ position of the object at time radecTai.
radecCov	float[3]	various	radec covariance matrix.
radecTai	double	time	Time at which the object was at a position radec.
pm	float[2]	mas/yr	Proper motion vector <sup>46</sup> .
parallax	float	mas	Trigonometric parallax.
pmParallaxCov	float[6]	various	Proper motion - parallax covariances.

*Continued on next page*

<sup>46</sup>High proper-motion or parallax objects will appear as “dipoles” in difference images. Great care will have to be taken not to misidentify these as subtraction artifacts.

Table 3: DIAObject Table

Name	Type	Unit	Description
pmParallaxLnL	float		Natural log of the likelihood of the linear proper motion-parallax fit <sup>47</sup> .
pmParallaxChi2	float		$\chi^2$ statistic of the model fit.
pmParallaxNdata	int		The number of data points used to fit the model.
psFluxMean	float[ugrizy]	nJy	Weighted mean of point-source model flux, psFlux.
psFluxMeanErr	float[ugrizy]	nJy	Standard error of psFluxMean.
psFluxSigma	float[ugrizy]	nJy	Standard deviation of the distribution of psFlux.
psFluxChi2	float[ugrizy]		$\chi^2$ statistic for the scatter of psFlux around psFluxMean.
psFluxNdata	int[ugrizy]		The number of data points used to compute psFluxChi2.
totFluxMean	float[ugrizy]	nJy	Weighted mean of forced photometry flux, totFlux.
totFluxMeanErr	float[ugrizy]	nJy	Standard error of totFluxMean.
totFluxSigma	float[ugrizy]	nJy	Standard deviation of the distribution of totFlux.
lcPeriodic	float[6 × 32]		Periodic features extracted from DIA-Source light-curves using generalized Lomb-Scargle periodogram [Table 4, 18] <sup>48</sup> .
lcNonPeriodic	float[6 × 20]		Non-periodic features extracted from DIA-Source light-curves [Table 5, 18].
nearbyObj	uint64[6]		Closest Objects (3 stars and 3 galaxies) in Data Release database.
nearbyObjDist	float[6]	arcsec	Distances to nearbyObj.

*Continued on next page*

<sup>47</sup>radec, pm, and parallax will all be simultaneously fitted for.

<sup>48</sup>The exact features in use when LSST begins operations are likely to be different compared to the baseline described here. This is to be expected given the rapid pace of research in time domain astronomy. However, the *number* of computed features is unlikely to grow beyond the present estimate.

Table 3: DIAObject Table

Name	Type	Unit	Description
nearbyObjLnP	float[6]		Natural log of the probability that the observed DIAObject is the same as the nearby Object <sup>49</sup> .
flags	bit[64]	bit	Various useful flags.

### 3.3.3 SSObject Table

DMS-REQ-0273

Table 4: SSObject Table

Name	Type	Unit	Description
ssObjectId	uint64		Unique identifier.
oe	double[7]	various	Osculating orbital elements at epoch ( $q, e, i, \Omega, \omega, M_0$ , epoch).
oeCov	double[28]	various	Covariance matrix for oe.
arc	float	days	Arc of observation.
orbFitLnL	float		Natural log of the likelihood of the orbital elements fit.
orbFitChi2	float		$\chi^2$ statistic of the orbital elements fit.
orbFitNdata	int		The number of data points (observations) used to fit the orbital elements.
MOID	float[2]	AU	Minimum orbit intersection distances <sup>50</sup>
moidLon	double[2]	degrees	MOID longitudes.
H	float[6]	mag	Mean absolute magnitude, per band [16, magnitude-phase system].
G <sub>1</sub>	float[6]	mag	G <sub>1</sub> slope parameter, per band [16, magnitude-phase system].
G <sub>2</sub>	float[6]	mag	G <sub>2</sub> slope parameter, per band [16, magnitude-phase system].
hErr	float[6]	mag	Uncertainty of H estimate.

*Continued on next page*

<sup>49</sup>This quantity will be computed by marginalizing over the product of position and proper motion error ellipses of the Object and DIAObject, assuming an appropriate prior.

<sup>50</sup><http://www2.lowell.edu/users/elgb/moid.html>



Table 4: SSObject Table

Name	Type	Unit	Description
g1Err	float[6]	mag	Uncertainty of $G_1$ estimate.
g2Err	float[6]	mag	Uncertainty of $G_2$ estimate.
flags	bit[64]	bit	Various useful flags.

The  $G_1$  and  $G_2$  parameters for the large majority of asteroids will not be well constrained until later in the survey. We may decide not to fit for it at all over the first few DRs and add it later in Operations, or provide two-parameter  $G_{12}$  fits. Alternatively, we may fit it using strong priors on slopes poorly constrained by the data. The design of the data management system is insensitive to this decision, making it possible to postpone it to Commissioning to ensure it follows the standard community practice at that time.

The LSST database will provide functions to compute the phase (Sun-Asteroid-Earth) angle  $\alpha$  for every observation, as well as the reduced,  $H(\alpha)$ , and absolute,  $H$ , asteroid magnitudes in LSST bands.

DMS-REQ-0323

### 3.3.4 Precovery Measurements

When a new DIASource is detected, it's useful to perform forced PSF photometry at the location of the new source on images taken prior to discovery. These are colloquially known as *precovery measurements*<sup>51</sup>. Performing precovery in real time over all previously acquired visits is too I/O intensive to be feasible. We therefore plan the following:

DMS-REQ-0287  
DMS-REQ-0286

1. For all newly discovered objects, perform precovery PSF photometry on visits taken over the previous 30 days<sup>52</sup>. These measurements will be stored in the DIAForcedSource table.
2. Make available a "precovery service" to request precovery for a limited number of DIA-Sources across all previous visits, and make it available within 24 hours of the request. Web interface and machine-accessible APIs will be provided.

precoveryWindow

DMS-REQ-0341

<sup>51</sup>When Solar System objects are concerned, precovery has a slightly different meaning: predicting the positions of newly identified SSObjects on previously acquired visits, and associating with them the DIASources consistent with these predictions.

<sup>52</sup>We will be maintaining a cache of 30 days of processed images to support this feature.

The former should satisfy the most common use cases (eg., SNe), while the latter will provide an opportunity for more extensive yet timely precovery of targets of special interest.

### 3.3.5 Image differencing during Data Release Production

In what we've described so far, the Prompt Products database is continually being added to as new images are taken and DIASources identified. Every time a new DIASource is associated to an existing DIAObject, the DIAObject record is updated to incorporate new information brought in by the DIASource. Once discovered and measured, the DIASources would never be re-discovered and re-measured at the pixel level.

DMS-REQ-0312

This would be far from optimal. The instrument will be better understood with time. Newer versions of LSST pipelines will improve detection and measurements on older data. Also, precovery photometry should optimally be performed for *all* objects, and not just a select few. The annual Data Release productions will therefore also include a full reanalysis of the time-domain information in the collected dataset, by performing image differencing on all images collected by the survey. The images will be processed using a single version of the image differencing and measurement software, resulting in a consistent set of DIASources, DIAObjects, ForcedSources, and SSObjects as part of a data release.

DMS-REQ-0313

DMS-REQ-0325

There will be three main advantages of time-domain data produced during Data Release processing, compared to the Prompt Products database: i) even the oldest data will be processed with the latest software, ii) astrometric and photometric calibration will be better, and iii) there will be no 12-month limit on the width of data window used to compute associated DIAObject measurements (proper motions, centroids, light curves, etc.).

diaCharacterization-Cutoff

## 3.4 Prompt Image Products

### 3.4.1 Visit Images

DMS-REQ-0069

Raw and Processed Visit Images will be made available for download no later than 24 hours from the end of visit acquisition.

L1PublicT

The images will remain accessible with low-latency (seconds from request to start of download) for at least 30 days, with slower access afterwards (minutes to hours).

l1CacheLifetime

### 3.4.2 Difference Images

DMS-REQ-0010

Complete difference images will be made available for download no later than 24 hours from the end of visit acquisition.

L1PublicT

The images will remain accessible with low-latency (seconds from request to start of download) for at least 30 days, with slower access afterwards (minutes to hours).

I1CacheLifetime

### 3.4.3 Image Differencing Templates

DMS-REQ-0280

Templates for difference image analysis will be created by coadding 6-months to a year long groups of visits. The coaddition process will take care to remove transient or fast moving objects (eg., asteroids) from the templates. Difference image analysis will use the appropriate template given the time of observation, airmass, and seeing.

## 3.5 Alerts to DIASources

### 3.5.1 Information Contained in Each Alert

For each detected DIASource, LSST will emit an “Event Alert” within 60 seconds of the end of visit (defined as the end of image readout from the LSST Camera). These alerts will be issued in VOEvent format<sup>53</sup>, and should be readable by VOEvent-compliant clients.

OTT1

DMS-REQ-0002

Each alert (a VOEvent packet) will at least include the following:

- *alertID*: An ID uniquely identifying this alert. It can also be used to execute a query against the Prompt Products database as it existed when this alert was issued.
- Science Data:
  - The DIASource record that triggered the alert, as well as the *filterName* and *programId* of the corresponding Visit
  - The entire DIAObject (or SSObject) record. DIAObject records include matching Object IDs from the latest Data Release, if they exist.

DMS-REQ-0274

<sup>53</sup>Or some other format that is broadly accepted and used by the community at the start of LSST commissioning.

- Any DIASource and DIAForcedSource records that exist, and difference image noise estimates where they do not, taken from the previous 12 months.
- Cut-out of the difference image centered on the DIASource (10 bytes/pixel, FITS MEF)
- Cut-out of the template image centered on the DIASource (10 bytes/pixel, FITS MEF)

diaCharacterization-  
Cutoff

The variable-size cutouts will be sized so as to encompass the entire footprint of the detected source, but be no smaller than  $30 \times 30$  pixels. The provided images will comprise of a flux (32 bit float), variance (32 bit float), and mask (16 bit flags) planes, and include metadata necessary for further processing (e.g., WCS, zero-point, PSF, etc.).

The items above are meant to represent the *information* transmitted with each alert; the content of the alert packet itself will be formatted to conform to VOEvent (or other relevant) standard. Where the existing standard is inadequate for LSST needs, LSST will propose extensions and work with the community to reach a common solution.

With each alert, we attempt to include as much information known to LSST about the DIA-Source as possible, to minimize the need for follow-up database queries. This speeds up classification and decision making at the user end, and relaxes the requirements on the database on the Project end.

### 3.5.2 Receiving and Filtering the Alerts

Alerts will be transmitted in VOEvent format, using standard IVOA protocols (e.g., VOEvent Transport Protocol; VTP<sup>54</sup>). As a very high rate of alerts is expected, approaching ~10 million per night, we plan for public VOEvent Event Brokers<sup>55</sup> to be the primary end-points of LSST's event streams. End-users will use these brokers to classify and filter events for subsets fitting their science goals. End-users will *not* be able to subscribe to full, unfiltered, alert streams coming directly from LSST<sup>56</sup>.

DMS-REQ-0002

<sup>54</sup>VOEvent Transport Protocol is currently an IVOA Note, but we understand work is under way to finalize and bring it up to full IVOA Recommendation status.

<sup>55</sup>These brokers are envisioned to be operated as a public service by third parties who will have signed MOUs with LSST.

<sup>56</sup>This is due to finite network bandwidth available: for example, 100 end-users subscribing to a ~100 Mbps stream (the peak full stream data rate at end of the first year of operations) would require 10Gbps WAN connection from the archive center, just to serve the alerts.

To directly serve the end-users, LSST will provide a basic, limited capacity, alert filtering service. This service will run at the LSST U.S. Archive Center (at NCSA). It will let astronomers create simple filters that limit what alerts are ultimately forwarded to them<sup>57</sup>. These *user defined filters* will be possible to specify using an SQL-like declarative language, or short snippets of (likely Python) code. For example, here's what a filter may look like:

DMS-REQ-0342

```
# Keep only never-before-seen events within two
# effective radii of a galaxy. This is for illustration
# only; the exact methods/members/APIs may change.
```

```
def filter(alert):
    if len(alert.sources) > 1:
        return False
    nn = alert.diaobject.nearest_neighbors[0]
    if not nn.flags.GALAXY:
        return False
    return nn.dist < 2. * nn.Re
```

We emphasize that this LSST-provided capability will be limited, and is *not* intended to satisfy the wide variety of use cases that a full-fledged public Event Broker could. For example, we do not plan to provide any *exclusive* classification to a unique category of object. Following the [SRD](#) specification, however, we will provide a limited number of pre-defined filters for a small number of object types of common interest. These will answer non-exclusive questions such as “is the light curve consistent with an RR Lyra?”, and will have potentially highly overlapping selections, designed to provide good completeness but perhaps only very modest purity. No information beyond what is contained in the V0Event packet will be available to the pre-defined or user-defined filters (e.g., no cross-matches to other catalogs). The complexity and run time of user defined filters will be limited by available resources. Execution latency will not be guaranteed. The number of V0Events transmitted to each user per visit will be limited as well (e.g., the equivalent of 20 full-size alert packets per visit per user, dynamically throttled depending on load). Finally, the total number of simultaneous subscribers is likely to be limited – in case of overwhelming interest, a TAC-like proposal process may be instituted.

DMS-REQ-0348

numBrokerAlerts

DMS-REQ-0343

numBrokerUsers

<sup>57</sup> More specifically, to their VTP clients. Typically, a user will use the Science User Interface (the web portal to LSST Archive Center) to set up the filters, and use their VTP client to receive the filtered V0Event stream.

## 4 Data Release Data Products

### 4.1 Overview

Data Release data products result from direct image<sup>58</sup> analysis. They're designed to enable *static sky* science (eg., studies of galaxy evolution, or weak lensing), and time-domain science that is not time sensitive (eg. statistical investigations of variability). They include image products (reduced single-epoch exposures, called *Processed Visit Images* or, sometimes, *calibrated exposures*, and coadds), and catalog products (tables of objects, sources, their measured properties, and related metadata).

DMS-REQ-0069  
DMS-REQ-0279  
DMS-REQ-0281  
DMS-REQ-0275  
DMS-REQ-0267  
DMS-REQ-0276  
DMS-REQ-0275

Similarly to Prompt catalogs of DIAObjects and DIASources, Objects in the Data Release catalog represent the astrophysical phenomena (stars, galaxies, quasars, etc.), while Sources represent their single-epoch observations. Sources are independently detected and measured in single epoch exposures and recorded in the Source table.

DMS-REQ-0267

The master list of Objects in the Data Release will be generated by associating and deblending the list of single-epoch DIASource detections and the lists of sources detected on coadds (CoaddSources). We plan to build coadds designed to maximize depth (*"deep coadds"*) and coadds designed to achieve a good combination of depth and seeing (*"best seeing coadds"*), unless algorithms will enable these two to be the same. We will also build a series of *short-period* (eg. yearly, or multi-year) coadds. The flux limit in deep coadds will be significantly fainter than in individual visits, and the best seeing coadds will help with deblending the detected sources. The short-period coadds are necessary to avoid missing faint objects showing long-term variability. These coadds will be built for all bands, as well as some combining multiple bands (*"multi-color coadds"*). **Not all of these will be preserved** after sources are detected and measured (see § 4.4.3 for details). We will provide a facility to regenerate their subsections as pipeline tasks in the Science Platform (§ 5).

DMS-REQ-0275  
DMS-REQ-0279  
  
DMS-REQ-0330  
DMS-REQ-0337

DMS-REQ-0281

DMS-REQ-0311  
DMS-REQ-0275

The deblender will be run simultaneously on the catalog of peaks<sup>59</sup> detected in the coadds, the DIAObject catalog from the Prompt Products database, and one or more external catalogs. It will use the knowledge of peak positions, bands, time, time variability (from Prompt prod-

<sup>58</sup>As opposed to *difference image*, for Prompt products.

<sup>59</sup>The source detection algorithm we plan to employ finds regions of connected pixels above the nominal  $S/N$  threshold in the *PSF-likelihood image* of the visit (or coadd). These regions are called *footprints*. Each footprint may have one or more *peaks*, and it is these peaks that the deblender will use to infer the number and positions of objects blended in each footprint.

ucts and the single-epoch Source detections), inferred motion, Galactic longitude and latitude, and other available information to produce a master list of deblended Objects. Metadata on why and how a particular Object was deblended will be kept.

DMS-REQ-0276

The properties of Objects, including their exact positions, motions, parallaxes, and shapes, will be characterized by MultiFit-type algorithms<sup>60</sup>.

Finally, to enable studies of variability, the fluxes of all Objects will be measured on individual visits (using both direct and difference images), with their shape parameters and deblending resolutions kept constant. This process is known as *forced photometry* (see § 4.2.4), and the flux measurements will be stored in the ForcedSource table.

DMS-REQ-0268

## 4.2 Data Release Data Processing

Figures 3 and 4 present a high-level overview of the Data Release data processing workflow<sup>61</sup>. Logically<sup>62</sup>, the processing begins with single-visit image reduction and source measurement, followed by global astrometric and photometric calibration, coadd creation, detection on coadds, association and deblending, object characterization, and forced photometry measurements.

The following is a high-level description of steps which will occur during regular Data Release data processing (bullets 1 and 2 below map to pipeline 1, *Single Visit Processing*, in Figure 3, bullet 3 is pipeline 2, *Image Coaddition*, bullets 4-6 map to pipeline 3, *Coadded Image Analysis*, and bullet 7 is pipeline 4, *Multi-epoch Object Characterization*):

1. *Single Visit Processing*: Raw exposures are reduced to Processed Visit Images, and Sources are independently detected, deblended, and measured on all visits. Their measurements (instrumental fluxes and shapes) are stored in the Source table.
2. *Relative calibration*: The survey is internally calibrated, both photometrically and astrometrically. Relative zero-point and astrometric corrections are computed for every visit.

DMS-REQ-0267

DMS-REQ-0029

<sup>60</sup>“MultiFit algorithms” are those that fit a PSF-convolved model (so-called “forward modeling”) to all multi-epoch observations of an object. This approach is in contrast to measurement techniques where multi-epoch images are coadded first, and the properties are measured from the coadded pixels.

<sup>61</sup>Note that some LSST documents refer to *Data Release Processing*, which includes both Prompt reprocessing (see § 3.3.5), and the Data Release processing described here.

<sup>62</sup>The actual implementation may parallelize these steps as much as possible.



Sufficient data is kept to reconstruct the normalized system response function  $\phi_b(\lambda)$  (see Eq. 5, [SRD](#)) at every position in the focal plane at the time of each visit as required by § 3.3.4 of the [SRD](#).

DMS-REQ-0030

3. *Coadd creation*: Deep, seeing optimized, and short-period per-band coadds are created in *ugrizy* bands, as well as deeper, multi-color, coadds<sup>63</sup>. Transient sources (including Solar System objects, explosive transients, etc), will be rejected from the coadds. See § 4.4.3 for details.

DMS-REQ-0279

DMS-REQ-0337

DMS-REQ-0281

4. *Coadd source detection*. Sources will be detected on all coadds generated in the previous step. The source detection algorithm will detect regions of connected pixels, known as *footprints*, above the nominal  $S/N$  threshold in the *PSF-likelihood image* of the visit. An appropriate algorithm will be run to also detect extended low surface brightness objects (eg., binned detection algorithm from SDSS). Each footprint may have one or more *peaks*, and the collection of these peaks (and their membership in the footprints) are the output of this stage.

DMS-REQ-0277

DMS-REQ-0349

5. *Association and deblending*. The next stage in the pipeline, which we will for simplicity just call *the deblender*, will synthesize a list of unique objects. In doing so it will consider the catalogs of CoaddSources, catalogs of DIASources, DIAObjects and SSObjects detected on difference images, and objects from external catalogs<sup>64</sup>.

DMS-REQ-0275

DMS-REQ-0034

The deblender will make use of all information available at this stage, including the knowledge of peak positions, bands, time, time variability (from Prompt products), Galactic longitude and latitude, etc. The output of this stage is a list of uncharacterized Objects<sup>65</sup>.

6. *Coadd object characterization*. Object properties such as adaptive moments and aperture fluxes will be measured on the coadds. These will be stored in additional columns in the Object table. Models fit in multi-epoch object characterization will also be fit first to the coadds and stored.

DMS-REQ-0276

7. *Multi-epoch object characterization*. A set of predefined model fits and measurements will be performed on each of the Objects identified in the previous step, *taking all avail-*

<sup>63</sup>We'll denote the "band" of the multi-color coadd as 'M'.

<sup>64</sup>Note that Sources are not considered when generating the Object list (given the large number of visits in each band, the false positives close to the faint end would increase the complexity of association and deblending algorithms). It is possible for intermittent sources that are detected just above the faint detection limit of single visits to be undetected in coadds, and thus to not have a matching Object. To enable easy identification of such Sources, the nearest Object associated with each Source, if any, will be recorded.

<sup>65</sup>Depending on the exact implementation of the deblender, this stage may also attach significant metadata (eg, deblended footprints and pixel-weight maps) to each deblended Object record.

able multi-epoch data into account. Model fits will be performed using *MultiFit*-type algorithms. Rather than coadding a set of images and measuring object characteristics on the coadd, MultiFit simultaneously fits PSF-convolved models to the objects multiple observations. This reduces systematic errors, improves the overall  $S/N$ , and allows for fitting of time-dependent quantities degenerate with shape on the coadds (for example, the proper motion). The models we plan to fit will *not* allow for flux variability (see the next item).

DMS-REQ-0275

8. *Forced Photometry*. Source fluxes will be measured on every visit, with the position, motion, shape, and the deblending parameters characterized in the previous step kept fixed. Measurements will be performed on both direct images and difference images. This process of *forced photometry*, will result in the characterization of the light-curve for each object in the survey. The fluxes will be stored in the ForcedSource table.

DMS-REQ-0268

## 4.2.1 Object Characterization Measures

Properties of detected objects will be measured as a part of the object characterization step described in the previous section and stored in the Object table. These measurements are designed to enable LSST “static sky” science. This section discusses at a high level which properties will be measured and how those measurements will be performed. For a detailed list of quantities being fit/measured, see the table in § 4.3.1.

All measurements discussed in this section deal with properties of *objects*, and will be performed on multi-epoch coadds, or by simultaneously fitting to all epochs. Measurements of sources in individual visits, independent of all others, are described in § 4.2.3.

To enable science cases depending on observations of non-variable objects in the LSST-observed sky, we plan to measure the following using the MultiFit approach:

- *Point source model fit*. The observed object is modeled as a point source with finite proper motion and parallax and constant flux (allowed to be different in each band). This model is a good description for non-variable stars and other unresolved sources. Its 11 parameters will be simultaneously constrained using information from all available observations in all bands<sup>66</sup>.

DMS-REQ-0276

<sup>66</sup>The fitting procedure will account for differential chromatic refraction.

- *Bulge-disk model fit.* The object is modeled as a sum of a de Vaucouleurs (Sersic  $n = 4$ ) and an exponential (Sersic  $n = 1$ ) component. This model is intended to be a reasonable description of galaxies<sup>67</sup>. The object is assumed not to move<sup>68</sup>. The components share the same ellipticity and center. The model is independently fit to each band. There are a total of 8 free parameters, which will be simultaneously constrained using information from all available epochs for each band. Where there's insufficient data to constrain the likelihood (eg., small, poorly resolved, galaxies, or very few epochs), priors will be adopted to limit the range of its sampling.

DMS-REQ-0276

We will also explore fitting the galaxy model simultaneously to all bands, with some parameters constrained to be the same or related via a hierarchical model across bands. As this reduces the number of overall model parameters significantly, we could then consider freeing up other parameters. One likely scenario is that we would allow the bulge and disk ellipticities to differ; another possibility is allowing the Serisic indices of one or both components to vary. The ultimate determination of which model to use will be driven by empirical tests of the robustness and quality of the fits on both low- and high-redshift galaxies.

DMS-REQ-0333

In addition to the maximum likelihood values of fitted parameters and their covariance matrix, a number (currently planned to be  $\sim 200$ , on average<sup>69</sup>) of independent samples from the likelihood function will be provided. These will enable use-cases sensitive to departures from the Gaussian approximation, with shear measurement being the primary use case. A permissible descope, in case of insufficient storage, will be not to sample the posterior for  $u$  and  $y$  bands.

- *Standard colors.* Colors of the object in "standard seeing" (for example, the third quartile expected survey seeing in the  $i$  band,  $\sim 0.9$  arcsec) will be measured. These colors are guaranteed to be seeing-insensitive, suitable for estimation of photometric redshifts<sup>70</sup>.
- *Centroids.* Centroids will be computed independently for each band using an algorithm similar to that employed by SDSS. Information from all<sup>71</sup> epochs will be used to derive the estimate. These centroids will be used for adaptive moment, Petrosian, Kron, standard color, and aperture measurements.

DMS-REQ-0276

DMS-REQ-0276

<sup>67</sup>We may reconsider this choice if a better suited parametrization is discovered while LSST is in Construction.

<sup>68</sup>i.e., have zero proper motion and trigonometric parallax.

<sup>69</sup>This choice of the number of independent samples will be verified during Construction.

<sup>70</sup>The problem of optimal determination of photometric redshift is the subject of intense research. The approach we're taking here is conservative, following contemporary practices. As new insights develop, we will revisit the issue.

<sup>71</sup>Whenever we say *all*, it should be understood that this does not preclude reasonable data quality cuts to exclude data that would otherwise degrade the measurement.

- *Adaptive moments.* Adaptive moments will be computed using information from all epochs, independently for each band. The moments of the PSF realized at the position of the object will be provided as well. DMS-REQ-0276
- *Petrosian and Kron fluxes.* Petrosian and Kron radii and fluxes will be measured in standard seeing using self-similar elliptical apertures computed from adaptive moments. The apertures will be PSF-corrected and *homogenized*, convolved to a canonical circular PSF<sup>72</sup>. The radii will be computed independently for each band. Fluxes will be computed in each band, by integrating the light within some multiple of *the radius measured in the canonical band*<sup>73</sup> (most likely the *i* band). Radii enclosing 50% and 90% of light will be provided. DMS-REQ-0276
- *Aperture surface brightness.* Aperture surface brightness will be computed in a variable number<sup>74</sup> of concentric, logarithmically spaced, PSF-homogenized, elliptical apertures, in standard seeing. DMS-REQ-0276
- *Variability characterization.* Parameters will be provided, designed to characterize periodic and aperiodic variability features [18], in each bandpass. We caution that the exact features in use when LSST begins operations are likely to be different compared to the baseline described here; this is to be expected given the rapid pace of research in time domain astronomy. However, their *number* is unlikely to grow beyond the present estimate. DMS-REQ-0276

#### 4.2.2 Supporting Science Cases Requiring Full Posteriors

Science cases sensitive to systematics, departures of likelihood from Gaussianity, or requiring user-specified priors, demand knowledge of the shape of the likelihood function beyond a simple Gaussian approximation around the ML value. The estimate of bulge-disk model parameters and the estimate of photometric redshifts are two examples where knowledge of the full posterior is likely to be needed for LSST science cases. DMS-REQ-0046  
DMS-REQ-0276

<sup>72</sup>This is an attempt to derive a definition of elliptical apertures that does not depend on seeing. For example, for a large galaxy, the correction to standard seeing will introduce little change to measured ellipticity. Corrected apertures for small galaxies will tend to be circular (due to smearing by the PSF). In the intermediate regime, this method results in derived apertures that are relatively seeing-independent. Note that this is only the case for *apertures*; the measured flux will still be seeing dependent and it is up to the user to take this into account.

<sup>73</sup>The shape of the aperture in all bands will be set by the profile of the galaxy in the canonical band alone. This procedure ensures that the color measured by comparing the flux in different bands is measured through a consistent aperture. See <http://www.sdss.org/dr7/algorithms/photometry.html> for details.

<sup>74</sup>The number will depend on the size of the source.

We currently plan to provide this information in two ways: a) by providing independent samples from the likelihood function (in the case of the bulge-disk model), and b) by providing parametric estimates of the likelihood function (for the photometric redshifts). As will be shown in Table 5, the current allocation is ~200 samples (on average) for the bulge-disk model, and ~100 parameters for describing the photo-z (photometric redshift) likelihood distributions, per object.

DMS-REQ-0333

The methods of storing likelihood functions (or samples thereof) will continue to be developed and optimized throughout Construction and Commissioning. The key limitation, on the amount of data needed to be stored, can be overcome by compression techniques. For example, simply noticing that not more than ~0.5% accuracy is needed for sample values allows one to increase the number of samples by a factor of 4. More advanced techniques, such as PCA analysis of the likelihoods across the entire catalog, may allow us to store even more, providing a better estimate of the shape of the likelihood function. In that sense, what is presented in Table 5 should be thought of as a **conservative estimate**, which we plan to improve upon as development continues in Construction.

### 4.2.3 Source Characterization

Sources will be detected on individual visits as well as the coadds. Sources detected on coadds will primarily serve as inputs to the construction of the master object list as described in § 4.2, and may support other LSST science cases as seen fit by the users (for example, searches for objects whose shapes vary over time).

DMS-REQ-0277

DMS-REQ-0267

The following Source properties are planned to be measured:

- *Static point source model fit.* The source is modeled as a static point source. There are a total of 3 free parameters ( $\alpha$ ,  $\delta$ , flux). This model is a good description of stars and other unresolved sources.
- *Centroids.* Centroids are currently planned to be computed using an algorithm similar to that employed by SDSS. These centroids will be used for adaptive moment and aperture magnitude measurements.
- *Adaptive moments.* Adaptive moments will be computed. The moments of the PSF realized at the position of the object will be provided as well.

DMS-REQ-0267

DMS-REQ-0267

DMS-REQ-0267

- *Aperture surface brightness.* Aperture surface brightness will be computed in a variable number<sup>75</sup> of concentric, logarithmically spaced, PSF-homogenized, elliptical apertures.

DMS-REQ-0267

Note that we do *not* plan to fit extended source Bulge+Disk models to individual Sources, nor measure per-visit Petrosian or Kron fluxes. These are object properties that are not expected to vary in time<sup>76</sup>, and will be better characterized by MultiFit (in the Object table). For example, although a simple extendedness characterization is present in the Source table, star-galaxy separation (an estimate of the probability that a source is resolved, given the PSF) will be better characterized by MultiFit.

#### 4.2.4 Forced Photometry

DMS-REQ-0268

DMS-REQ-0287

*Forced Photometry* is the measurement of flux in individual visits, given a fixed position, shape, and the deblending parameters of an object. It enables the study of time variability of an object's flux, irrespective of whether the flux in any given individual visit is above or below the single-visit detection threshold.

Forced photometry will be performed on all visits, for all Objects, using both direct images and difference images. The measured fluxes will be stored in the ForcedSources table. Due to space constraints, we only plan to measure the PSF flux.

#### 4.2.5 Crowded Field Photometry

A fraction of LSST imaging will cover areas of high object (mostly stellar) density. These include the Galactic plane, the Large and Small Magellanic Clouds, and a number of globular clusters (among others).

LSST image processing and measurement software, although primarily designed to operate in non-crowded regions, is expected to perform well in areas of crowding. The current LSST applications development plan envisions making the deblender aware of Galactic longitude and latitude, and permitting it to use that information as a prior when deciding how to deblend objects. While not guaranteed to reach the accuracy or completeness of purpose-built

<sup>75</sup>The number will depend on the size of the source.

<sup>76</sup>Objects that *do* change shape with time would, obviously, be of particular interest. Aperture fluxes provided in the Source table should suffice to detect these. Further per-visit shape characterization can be performed using the Science Platform.

crowded field photometry codes, we expect this approach will yield acceptable results even in areas of moderately high crowding.

Note that this discussion only pertains to processing of *direct images*. Crowding is not expected to significantly impact the quality of data products derived from *difference images* (i.e., Prompt products).

### 4.3 The Data Release Catalogs

This section presents the contents of key Data Release catalog tables. As was the case for Prompt Products (see § 3.3), here we present the *conceptual schemas* for the most important Data Release tables (the Object, Source, and ForcedSource tables). The tables themselves are defined in LDM-153<sup>77</sup>.

These convey *what* data will be recorded in each table, rather than the details of *how*. For example, columns whose type is an array (eg., radec) may be expanded to one table column per element of the array (eg., ra, dec1) once this schema is translated to SQL. Secondly, the tables to be presented are normalized (i.e., contain no redundant information). For example, since the band of observation can be found by joining a Source table to the table with exposure metadata, there's no column named band in the Source table. In the as-built database, the views presented to the users will be appropriately denormalized for ease of use.

DMS-REQ-0332

#### 4.3.1 The Object Table

DMS-REQ-0275

Table 5: Data Release Catalog Object Table

Name	Type	Unit	Description
objectId	uint64		Unique object identifier
parentObjectId	uint64		ID of the parent Object this object has been deblended from, if any.

*Continued on next page*

<sup>77</sup>The SQL definition itself can be found in the cat package.



Table 5: Data Release Catalog Object Table

Name	Type	Unit	Description
radec	double[6][2]	degrees	Position of the object (centroid), computed independently in each band. The centroid will be computed using an algorithm similar to that employed by SDSS.
radecErr	double[6][2]	arcsec	Uncertainty of radec.
psRadecTai	double	time	Point source model: Time at which the object was at position psRadec.
psRadec	double[2]	degrees	Point source model: $(\alpha, \delta)$ position of the object at time psRadecTai.
psPm	float[2]	mas/yr	Point source model: Proper motion vector.
psParallax	float	mas	Point source model: Parallax.
psFlux	float[ugrizy]	nJy	Point source model fluxes <sup>78</sup> .
psCov	float[66]	various	Point-source model covariance matrix <sup>79</sup> .
psLnL	float		Natural $\log$ likelihood of the observed data given the point source model.
psChi2	float		$\chi^2$ statistic of the model fit.
psNdata	int		The number of data points (pixels) used to fit the model.
bdRadec	double[2][ugrizy]		B+D model <sup>80</sup> : $(\alpha, \delta)$ position of the object, in each band.
bdEllip	float[2][ugrizy]		B+D model: Ellipticity $(e_1, e_2)$ of the object.
bdFluxB	float[ugrizy]	nJy	B+D model: Integrated flux of the de Vaucouleurs component.

*Continued on next page*

<sup>78</sup>Point source model assumes that fluxes are constant in each band. If the object is variable, psFlux will effectively be some estimate of the average flux.

<sup>79</sup>Not all elements of the covariance matrix need to be stored with same precision. While the variances will be stored as 32 bit floats ( $\sim$  seven significant digits), the covariances may be stored to  $\sim$  three significant digits ( $\sim 1\%$ ).

<sup>80</sup>Though we refer to this model as “Bulge plus Disk”, we caution the reader that the decomposition, while physically motivated, should not be taken too literally.

Table 5: Data Release Catalog Object Table

Name	Type	Unit	Description
bdFluxD	float[ugrizy]	nJy	B+D model: Integrated flux of the exponential component.
bdReB	float[ugrizy]	arcsec	B+D model: Effective radius of the de Vaucouleurs profile component.
bdReD	float[ugrizy]	arcsec	B+D model: Effective radius of the exponential profile component.
bdCov	float[36][ugrizy]		B+D model covariance matrix <sup>81</sup> .
bdLnL	float[ugrizy]		Natural $\log$ likelihood of the observed data given the bulge+disk model.
bdChi2	float[ugrizy]		$\chi^2$ statistic of the model fit.
bdNdata	int[ugrizy]		The number of data points (pixels) used to fit the model.
bdSamples	float16[9][200][ugrizy]		Independent samples of bulge+disk likelihood surface. All sampled quantities will be stored with at least $\sim 3$ significant digits of precision. The number of samples will vary from object to object, depending on how well the object's likelihood function is approximated by a Gaussian.
stdColor	float[5]	mag	Color of the object measured in "standard seeing". While the exact algorithm is yet to be determined, this color is guaranteed to be seeing-independent and suitable for photo-z determinations.
stdColorErr	float[5]	mag	Uncertainty of stdColor.

*Continued on next page*

<sup>81</sup>See psCov for notes on precision of variances/covariances.

Table 5: Data Release Catalog Object Table

Name	Type	Unit	Description
lxx	float	arcsec <sup>2</sup>	Adaptive second moment of the source intensity. See Bernstein & Jarvis [2] for detailed discussion of all adaptive-moment related quantities <sup>82</sup> .
lyy	float	arcsec <sup>2</sup>	Adaptive second moment of the source intensity.
lxy	float	arcsec <sup>2</sup>	Adaptive second moment of the source intensity.
lcov	float[6]	arcsec <sup>4</sup>	Ixx, Iyy, Ixy covariance matrix.
lxxPSF	float	arcsec <sup>2</sup>	Adaptive second moment for the PSF.
lyyPSF	float	arcsec <sup>2</sup>	Adaptive second moment for the PSF.
lxyPSF	float	arcsec <sup>2</sup>	Adaptive second moment for the PSF.
m4	float[ugrizy]		Fourth order adaptive moment.
petroRad	float[ugrizy]	arcsec	Petrosian radius, computed using elliptical apertures defined by the adaptive moments.
petroRadErr	float[ugrizy]	arcsec	Uncertainty of petroRad
petroBand	int8		The band of the canonical petroRad
petroFlux	float[ugrizy]	nJy	Petrosian flux within a defined multiple of the canonical petroRad
petroFluxErr	float[ugrizy]	nJy	Uncertainty in petroFlux
petroRad50	float[ugrizy]	arcsec	Radius containing 50% of Petrosian flux.
petroRad50Err	float[ugrizy]	arcsec	Uncertainty of petroRad50.
petroRad90	float[ugrizy]	arcsec	Radius containing 90% of Petrosian flux.
petroRad90Err	float[ugrizy]	arcsec	Uncertainty of petroRad90.
kronRad	float[ugrizy]	arcsec	Kron radius (computed using elliptical apertures defined by the adaptive moments)

*Continued on next page*

<sup>82</sup>Or <http://ls.st/5f4> for a brief summary.

Table 5: Data Release Catalog Object Table

Name	Type	Unit	Description
kronRadErr	float[ugrizy]	arcsec	Uncertainty of kronRad
kronBand	int8		The band of the canonical kronRad
kronFlux	float[ugrizy]	nJy	Kron flux within a defined multiple of the canonical kronRad
kronFluxErr	float[ugrizy]	nJy	Uncertainty in kronFlux
kronRad50	float[ugrizy]	arcsec	Radius containing 50% of Kron flux.
kronRad50Err	float[ugrizy]	arcsec	Uncertainty of kronRad50.
kronRad90	float[ugrizy]	arcsec	Radius containing 90% of Kron flux.
kronRad90Err	float[ugrizy]	arcsec	Uncertainty of kronRad90.
apNann	int8		Number of elliptical annuli (see below).
apMeanSb	float[6][apNann] nJy/arcsec <sup>2</sup>		Mean surface brightness within an annulus <sup>83</sup> .
apMeanSbSigma	float[6][apNann] nJy/arcsec <sup>2</sup>		Standard deviation of apMeanSb.
extendedness	float		A measure of extendedness, computed using a combination of available moments, or from a likelihood ratio of point/B+D source models (exact algorithm TBD). <i>extendedness</i> = 1 implies a high degree of confidence that the source is extended. <i>extendedness</i> = 0 implies a high degree of confidence that the source is point-like.
lcPeriodic	float[6 × 32]		Periodic features extracted from difference image-based light-curves using generalized Lomb-Scargle periodogram [Table 4, 18].
lcNonPeriodic	float[6 × 20]		Non-periodic features extracted from difference image-based light-curves [Table 5, 18].

*Continued on next page*

<sup>83</sup>A database function will be provided to compute the area of each annulus, to enable the computation of aperture flux.

Table 5: Data Release Catalog Object Table

Name	Type	Unit	Description
photoZ	float[2 × 95]		Photometric redshift likelihood samples – pairs of ( $z$ , $\log L$ ) – computed using a to-be-determined published and widely accepted algorithm at the time of LSST Commissioning.
photoZ_pest	float[10]		Point estimates for photometric redshift <sup>84</sup> , computed using photoZ.
flags	bit[128]	bit	Various useful flags.

### 4.3.2 Source Table

Source measurements are performed independently on individual visits. They're designed to enable relative astrometric and photometric calibration, variability studies of high signal-to-noise objects, and studies of high SNR objects that vary in position and/or shape (eg., comets).

DMS-REQ-0267

Table 6: Data Release Catalog Source Table

Name	Type	Unit	Description
sourceId	uint64		Unique source identifier <sup>85</sup>
ccdVisitId	uint64		ID of CCD and visit where this source was measured
objectId	uint64		ID of the object this source was associated with, if any.
ssObjectId	uint64		ID of the SSObject this source has been linked to, if any.
parentSourceId	uint64		ID of the parent Source this source has been deblended from, if any.

*Continued on next page*

<sup>84</sup>TBD but likely candidates are the mode, mean, standard deviation, skewness, kurtosis, and 1%, 5%, 25%, 50%, 75%, and 99% points from cumulative distribution.

<sup>85</sup>It would be optimal if the source ID is globally unique across all releases. Whether that's realized will depend on technological and space constraints.

Table 6: Data Release Catalog Source Table

Name	Type	Unit	Description
xy	float[2]	pixels	Position of the object (centroid), computed using an algorithm similar to that used by SDSS.
xyCov	float[3]		Covariance matrix for xy.
radec	double[2]	arcsec	Calibrated ( $\alpha$ , $\delta$ ) of the source, transformed from xy.
radecCov	float[3]	arcsec	Covariance matrix for radec.
apFlux	float	nJy	Calibrated aperture flux.
apFluxErr	float	nJy	Estimated uncertainty of apFlux.
sky	float	nJy/arcsec <sup>2</sup>	Estimated background (sky) surface brightness at the position (centroid) of the source.
skyErr	float	nJy/arcsec <sup>2</sup>	Estimated uncertainty of sky.
psRadec	double[2]	degrees	Point source model: ( $\alpha$ , $\delta$ ) position of the object.
psFlux	float	nJy	Calibrated point source model flux.
psCov	float[6]	various	Point-source model covariance matrix <sup>86</sup> .
psLnL	float		Natural $\log$ likelihood of the observed data given the point source model.
psChi2	float		$\chi^2$ statistic of the model fit.
psNdata	int		The number of data points (pixels) used to fit the model.
lxx	float	arcsec <sup>2</sup>	Adaptive second moment of the source intensity. See Bernstein & Jarvis [2] for detailed discussion of all adaptive-moment related quantities <sup>87</sup> .
lyy	float	arcsec <sup>2</sup>	Adaptive second moment of the source intensity.

*Continued on next page*

<sup>86</sup>Not all elements of the covariance matrix will be stored with same precision. While the variances will be stored as 32 bit floats (~ seven significant digits), the covariances may be stored to ~ three significant digits (~1%).

<sup>87</sup>Or <http://ls.st/5f4> for a brief summary.

Table 6: Data Release Catalog Source Table

Name	Type	Unit	Description
lxy	float	arcsec <sup>2</sup>	Adaptive second moment of the source intensity.
lcov	float[6]	arcsec <sup>4</sup>	Ixx, Iyy, Ixy covariance matrix.
lxxPSF	float	arcsec <sup>2</sup>	Adaptive second moment for the PSF.
lyyPSF	float	arcsec <sup>2</sup>	Adaptive second moment for the PSF.
lxyPSF	float	arcsec <sup>2</sup>	Adaptive second moment for the PSF.
apNann	int8		Number of elliptical annuli (see below).
apMeanSb	float[apNann]	nJy	Mean surface brightness within an annulus.
apMeanSbSigma	float[apNann]	nJy	Standard deviation of apMeanSb.
extendedness	float		A measure of extendedness, computed using a combination of available moments (exact algorithm TBD). <i>extendedness</i> = 1 implies a high degree of confidence that the source is extended. <i>extendedness</i> = 0 implies a high degree of confidence that the source is point-like.
flags	bit[64]	bit	Various useful flags.

### 4.3.3 ForcedSource Table

DMS-REQ-0268

Table 7: Data Release Catalog ForcedSource Table

Name	Type	Unit	Description
objectId	uint64		Unique object identifier
ccdVisitId	uint64		ID of CCD and visit where this source was measured
psFlux	float	nJy	Point source model flux on direct image, if performed.

*Continued on next page*



Table 7: Data Release Catalog ForcedSource Table

Name	Type	Unit	Description
psFluxErr	float	nJy	Point source model flux error, stored to 1% precision.
psDiffFlux	float	nJy	Point source model flux on difference image, if performed.
psDiffFluxErr	float	nJy	Point source model flux error, stored to 1% precision.
flags	bit[8]	bit	Various useful flags.

## 4.4 Data Release Image Products

### 4.4.1 Visit Images

DMS-REQ-0065

Raw exposures, including individual snaps, and Processed Visit Images will be made available for download as FITS files. They will be downloadable both through a human-friendly Science User Interface, as well as using machine-friendly APIs.

Required calibration data, processing metadata, and all necessary image processing software will be provided to enable the user to generate bitwise identical processed images from raw images<sup>88</sup>.

DMS-REQ-0130

DMS-REQ-0298

DMS-REQ-0308

### 4.4.2 Calibration Data

All calibration frames (darks, flats, biases, fringe, etc.) will be preserved and made available for download as FITS files.

DMS-REQ-0130

DMS-REQ-0065

DMS-REQ-0298

All auxiliary telescope data, both raw (images with spectra) and processed (calibrated spectra, derived atmosphere models), will be preserved and made available for download.

<sup>88</sup>Assuming identically performing software and hardware configuration.

### 4.4.3 Coadded Images

In the course of Data Release processing, multiple classes and numerous coadds will be created<sup>89</sup>:

- A set of *deep coadds*. One deep coadd will be created for each of the *ugrizy* bands, plus a seventh, deeper, multi-color coadd. These coadds will be optimized for a reasonable combination of depth (i.e., employ no PSF matching) and resolution (i.e., visits with significantly degraded seeing may be omitted). Transient sources (including Solar System objects, explosive transients, etc), will be removed. Care will be taken to preserve the astrophysical backgrounds<sup>90</sup>.

DMS-REQ-0279

DMS-REQ-0281

The six per-band coadds will be kept indefinitely and made available to the users. *Their primary purpose is to enable the end-users to apply alternative object characterization algorithms, perform studies of diffuse structures, and for visualization.*

DMS-REQ-0334

- A set of *best seeing* coadds. One deep coadd will be created for each of the *ugrizy* bands, using only the best seeing data (for example, using only the first quartile of the realized seeing distribution). These will be built to assist the deblending process. These coadds will be kept indefinitely and made available to the users.
- A set of *short-period* coadds. These will comprise of multiple (*ugrizyM*) sets of yearly and multi-year coadds. Each of these sets will be created using only a subset of the data, and otherwise share the characteristics of the deep coadds described above. These are designed to enable detection of long-term variable or moving<sup>91</sup> objects that would be “washed out” (or rejected) in full-depth coadds. **We do not plan to keep and make these coadds available.** We will retain and provide sufficient metadata for users to re-create them using the Science Platform or other resources.
- One (*ugrizyM*) set of PSF-matched coadds. These will be used to measure colors and shapes of objects at “standard” seeing. **We do not plan to keep and make these coadds available.** We will retain and provide sufficient metadata for users to re-create them using Science Platform or other resources.

DMS-REQ-0330

DMS-REQ-0334

DMS-REQ-0337

DMS-REQ-0298

DMS-REQ-0311

DMS-REQ-0335

The exact details of which coadds to build, and which ones to keep, can change during Con-

<sup>89</sup>See LDM-151 for more details.

<sup>90</sup>For example, using “background matching” techniques [14]

<sup>91</sup>For example, nearby high proper motion stars.

struction without affecting the processing system design as the most expensive operations (raw image input and warping) are constant in the number of coadds produced. The data management system design *is* sensitive to the total *number and size* of coadds to be *kept* – these are the relevant constraining variables.

We reiterate that **not all coadds will be kept and served to the public**<sup>92</sup>, though sufficient metadata will be provided to users to recreate them on their own. Some coadds may be entirely “virtual”: for example, the PSF-matched coadds could be implemented as ad-hoc convolutions of postage stamps when the colors are measured.

DMS-REQ-0311

We will retain smaller sections of all generated coadds, to support quality assessment and targeted science. Retained sections may be positioned to cover areas of the sky of special interest such as overlaps with other surveys, nearby galaxies, large clusters, etc.

DMS-REQ-0338

## 4.5 Data Release Availability and Retention Policies

Over 10 years of operations, LSST will produce eleven data releases: two for the first year of survey operations, and one every subsequent year. Each data release will include reprocessing of all data from the start of the survey, up to the cutoff date for that release.

The contents of data releases are expected to range from a few PB (DR1) to ~70 PB for DR11 (this includes the raw images, retained coadds, and catalogs). Given that scale, it is not feasible to keep all data releases loaded and accessible at all times.

Instead, ***only the contents of the most recent data release, and the penultimate data release will be kept on fast storage and with catalogs loaded into the database.*** Statistics collected by prior surveys (eg., SDSS) show that users nearly always prefer accessing the most recent data release, but sometimes may use the penultimate one (this is especially true just after the publication of a new data release). Older releases are used rarely.

DMS-REQ-0313

To assist with data quality monitoring and assessment ***small, overlapping, samples of data from older releases will be kept loaded in the database.*** The sample size is expected to be on order of ~1-5% of the data release data, with larger samples kept early on in the survey. The goal is to allow one to test how the reported characterization of the same data varies

DMS-REQ-0339

<sup>92</sup>The coadds are a major cost driver for storage. LSST Data Management system is currently sized to keep and serve seven coadds, *ugrizyM*, over the full footprint of the survey.

from release to release.

Older releases will be archived to mass storage (tape). The users ***will not be able to perform database queries against archived releases***. They will be made available as bulk downloads in some common format (for example, FITS binary tables). Database software and data loading scripts will be provided for users who wish to set up a running copy of an older (or current) data release database on their systems.

DMS-REQ-0077

DMS-REQ-0300

All raw data used to generate any public data product (raw exposures, calibration frames, telemetry, configuration metadata, etc.) will be kept and made available for download.

DMS-REQ-0309

DMS-REQ-0346

## 5 User Generated Data Products and the Science Platform

*The Science Platform* is envisioned to enable science cases that would greatly benefit from co-location of user processing and/or data within the LSST Archive Center. The high-level requirement for this is established in § 3.5 of the LSST [SRD](#). The science platform vision is described in LSE-319 with more formal requirements listed in LDM-554 and the design described in LDM-542. The reader is referred to these documents for more information on the platform. As a non exhaustive summary authenticated and authorized users will have access to the platform granting them:

OSS-REQ-0140  
DMS-REQ-0125  
DMS-REQ-0128  
DMS-REQ-0033  
DMS-REQ-0032  
DMS-REQ-0308  
DMS-REQ-0119

1. Access to the Data Products as described in this document
2. processing resources for image reprocessing, etc.
3. storage resources to hold processed image outputs, query outputs or uploaded catalogs, etc.
4. access control to the storage resources including groups
5. the LSST tools and processing framework including the pipeline code <https://pipelines.lsst.io/>
6. a python based interface as provided by JupyterHub (or equivalent)
7. a fairly standard job control environment (like Condor).

DMS-REQ-0127  
  
DMS-REQ-0290  
DMS-REQ-0123  
DMS-REQ-0124  
DMS-REQ-0340

The platform is intended, when put to fullest use, to allow users to run their own productions-like runs on bulk image and/or catalog data, with mechanisms for creating and tracking large groups of jobs in a batch system.

The storage resources for User Generated data products come out of the [SRD](#) requirement for 10% of LSST data management capabilities to be devoted to user processing. In general, they are likely to be controlled by some form of a “resource allocation committee”. Users will probably have some small baseline automatic allocation, beyond which a SAC proposal is needed. The SAC may take into account scientific merit, length of time for which the storage is requested, and openness of the data to others, in setting its priorities.

DMS-REQ-0119

The details of access rights and transitive rights for user generated products are dealt with in LDO-13.

## 5.1 Migration of User Generated data products to Data Release products

User Generated data products that are found to be generally useful can be migrated to Data Release products. This is a fairly complex process that ultimately involves the project taking responsibility for supporting and running LSST-style code that implements the algorithm necessary to produce the data product (it's not just relabeling an existing User Generated data product as a Data Release data product). The project will provide necessary support for such migrations.

- For the migration to be considered, the creator of the L3DP will need to agree to make their data product public to the entire LSST data-rights community, along with supporting documentation and code. The code at first need not be in the LSST framework or even in an LSST-supported language.
- If the original proponent wrote her/his code in the C++/Python LSST stack environment (the “Science Platform”), it will be easier to migrate it to a Data Release product (though, obviously, using the same languages/frameworks does not guarantee that the code is of production quality).
- If the original code was written in another language or another data processing framework, the project may consider rewriting it to required LSST standards.
- Taking on a new Data Release data product means that the project is committing to code maintenance, data quality review, space allocation, and continuing production of the new Data Release data product through DR11.

## 6 Data Products for Special Programs

LSR-REQ-0075

The LSST Survey Specifications (LSST [SRD](#), § 3.4) specify that 90% of LSST observing time will be spent executing the so-called “universal cadence”. These observations will result in Prompt and Data Release data products described earlier in this document.

The remaining 10% of observing time will be devoted to special programs, obtaining improved coverage of interesting regions of observational parameter space. Examples include very deep ( $r \sim 26$ , per exposure) observations, observations with very short revisit times ( $\sim 1$  minute), and observations of “special” regions such as the Ecliptic, Galactic plane, and the Large and Small Magellanic Clouds. A third type of survey, micro-surveys, that would use about 1% of the time, may also be considered.

The details of these special programs or micro surveys are not yet defined<sup>93</sup>. Consequently, the specifics of their data products are left undefined at this time. Instead, we just specify the *constraints* on these data products, given the adopted Prompt/Data Release/User Generated architecture. It is understood that no special program will be selected that does not fit these constraints<sup>94</sup>. This allows us to size and construct the data management system, without knowing the exact definition of these programs this far in advance.

Processing for special programs will make use of the same software stack and computing capabilities as the processing for universal cadence. The programs are expected to use no more than  $\sim 10\%$  of computational and storage capacity of the LSST data processing cluster. When special products include time domain event alerts, their processing shall generally be subject to the same latency requirements as Prompt data products.

DMS-REQ-0320

DMS-REQ-0321  
DMS-REQ-0344  
OTT1

For simplicity of use and consistency, the data products for special programs will be stored in databases separate from the “main” (Prompt and Data Release) databases. The system will, however, allow for simple federation with Prompt/Data Release/User Generated data products (i.e., cross-queries and joins).

DMS-REQ-0322

As a concrete example, a data product complement for a “deep drilling” field designed for supernova discovery and characterization may consist of: i) alerts to events discovered by differencing the science images against a special deep drilling template, ii) a Prompt -like

<sup>93</sup>The initial complement is expected to be defined and selected no later than Science Verification.

<sup>94</sup>Or will come with additional, external, funding, capabilities, and/or expertise.



database iii) one or more “nightly co-adds” (co-adds built using the data from the entire night), produced and made available within ~24 hours, and iv) special deep templates, built using the best recently acquired seeing data, produced on a fortnightly cadence.

L1PublicT

Note that the data rights and access rules apply just as they would for Prompt/Data Release/User Generated. For example, while generated event alerts (if any) will be accessible world-wide, the image and catalog products will be restricted to users with LSST data rights.

## References

- [1] **[LDM-153]**, Becla, J., 2013, *LSST Database Baseline Schema*, LDM-153, URL <https://ls.st/LDM-153>
- [2] Bernstein, G.M., Jarvis, M., 2002, *AJ*, 123, 583 (arXiv:astro-ph/0107431), doi:10.1086/338085, ADS Link
- [3] **[LDO-13]**, Blum, R., et al., 2019, *LSST Data Policy*, LDO-13, URL <https://ls.st/LDO-13>
- [4] **[LSE-29]**, Claver, C.F., The LSST Systems Engineering Integrated Project Team, 2017, *LSST System Requirements (LSR)*, LSE-29, URL <https://ls.st/LSE-29>
- [5] **[LSE-30]**, Claver, C.F., The LSST Systems Engineering Integrated Project Team, 2018, *Observatory System Specifications (OSS)*, LSE-30, URL <https://ls.st/LSE-30>
- [6] **[LSE-61]**, Dubois-Felsmann, G., Jenness, T., 2018, *LSST Data Management Subsystem Requirements*, LSE-61, URL <https://ls.st/LSE-61>
- [7] **[LDM-542]**, Dubois-Felsmann, G., Lim, K.T., Wu, X., et al., 2017, *LSST Science Platform Design*, LDM-542, URL <https://ls.st/LDM-542>
- [8] **[LDM-554]**, Dubois-Felsmann, G., Ciardi, D., Mueller, F., Economou, F., 2018, *Science Platform Requirements*, LDM-554, URL <https://ls.st/LDM-554>
- [9] **[LPM-231]**, Dubois-Felsmann, G.P., Ivezić, Z., Juric, M., 2018, *LSST Data Product Categories*, LPM-231, URL <https://ls.st/LPM-231>
- [10] **[Document-27758]**, Ivezić, Ž., LSST Project Science Team, 2018, *On the choice of LSST flux units*, Document-27758, URL <https://ls.st/Document-27758>
- [11] **[LPM-17]**, Ivezić, Ž., The LSST Science Collaboration, 2018, *LSST Science Requirements Document*, LPM-17, URL <https://ls.st/LPM-17>

- [12] Ivezić, Ž., Kahn, S.M., Tyson, J.A., et al., 2019, *ApJ*, 873, 111 (arXiv:0805.2366), doi:10.3847/1538-4357/ab042c, ADS Link
- [13] **[LDM-133]**, Jurić, M., Lim, K.T., Kantor, J., 2013, *Data Management UML Domain Model*, LDM-133, URL <https://ls.st/LDM-133>
- [14] **[DMTN-035]**, Jurić, M., Becker, A., Shaw, R., Krughoff, K.S., Kantor, J., 2016, *Winter 2013 LSST DM Data Challenge Release Notes*, DMTN-035, URL <https://dmtn-035.lsst.io>, LSST Data Management Technical Note
- [15] **[LSE-319]**, Jurić, M., Ciardi, D., Dubois-Felsmann, G., 2017, *LSST Science Platform Vision Document*, LSE-319, URL <https://ls.st/LSE-319>
- [16] Muinonen, K., Belskaya, I.N., Cellino, A., et al., 2010, *Icarus*, 209, 542, doi:10.1016/j.icarus.2010.04.003, ADS Link
- [17] **[LDM-156]**, Myers, J., Jones, L., Axelrod, T., 2013, *Moving Object Pipeline System Design*, LDM-156, URL <https://ls.st/LDM-156>
- [18] Richards, J.W., Starr, D.L., Butler, N.R., et al., 2011, *ApJ*, 733, 10 (arXiv:1101.1959), doi:10.1088/0004-637X/733/1/10, ADS Link
- [19] **[LDM-151]**, Swinbank, J.D., et al., 2017, *Data Management Science Pipelines Design*, LDM-151, URL <https://ls.st/LDM-151>

## A Appendix: Conceptual Pipeline Design

A high-level conceptual overview of the LSST image processing science pipelines is illustrated in Figure 2. The pipeline definitions presented here are driven by their inputs, outputs and processing steps; they do *not* describe exact boundaries in the actual implementation code, execution, or development responsibilities within the Project. Processing from pipelines marked with 1, 2, and 5-8 is executed every day when new data are taken to produce Prompt Data Products. Annual Data Release processing includes pipelines 1-6 and 8 (everything except Alert production). These main conceptual steps in LSST image processing include the following pipelines (enumeration in this list corresponds to enumeration in Figure 2 but note that these steps can be interleaved in the actual processing flow):

1. *Single Visit Processing* pipeline (Figure 3) produces calibrated and characterized single-visit images from raw snaps. The main processing steps include instrumental signature removal, background estimation, source detection, deblending and measurements, point spread function estimation, and astrometric and photometric calibration.
2. *Image Coaddition* pipeline (Figure 4) produces coadded images of different flavors (optimized for depth, seeing, etc.) from an ensemble of single-visit images.
3. *Coadded Image Analysis* pipeline (Figure 4) defines the Object list and performs initial measurements on coadded images.
4. *Multi-epoch Object Characterization* pipeline (Figure 4) fits a library of image models to a set of Footprints of an Object family, measures additional quantities (e.g., the profile surface brightness in a series of annuli) not captured by those models, and performs Forced Photometry. All these measurements are performed on single-visit images (direct and difference images) and for all Objects.
5. *Image Differencing* pipeline (Figure 5) produces difference images from a single-visit and coadded (template) images.
6. *Difference Image Analysis* pipeline (Figure 5) updates DIAObject and SSObject lists with new DIASources detected on processed difference image, fits a library of image models to Footprints of these DIASources, and for all DIAObjects overlapping the difference image it performs Forced Photometry and recomputes summary quantities. During nightly Prompt processing, this pipeline also performs Forced Photometry for all new DIAObjects on difference images from the last 30 days.

precoveryWindow

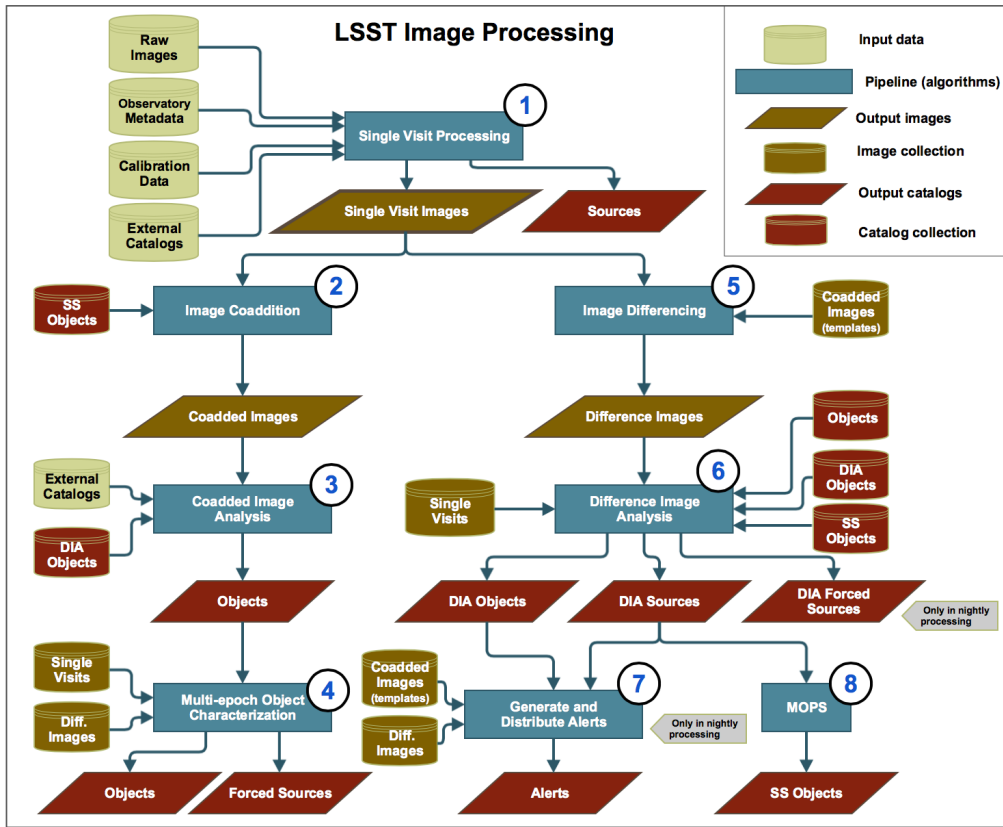


FIGURE 2: Illustration of the conceptual design of LSST science pipelines for imaging processing.

7. *Alert Generation and Distribution* pipeline (Figure 5) uses updated DIAObjects and DIA-Sources to generate and distribute Alerts (which also include postage stamp images of the DIASource in difference image and coadded template image).
8. *Moving Object Processing* pipeline (MOPS, Figure 6) combines all un-associated DIASources into plausible SSObjects and estimates their orbital parameters. The three main pipeline stages include associating new DIASources with known SSObjects, discovering new SS-Objects, and orbit refinement and management.

Further details about the pipeline design and implementation are available from the LSST document LDM-151.

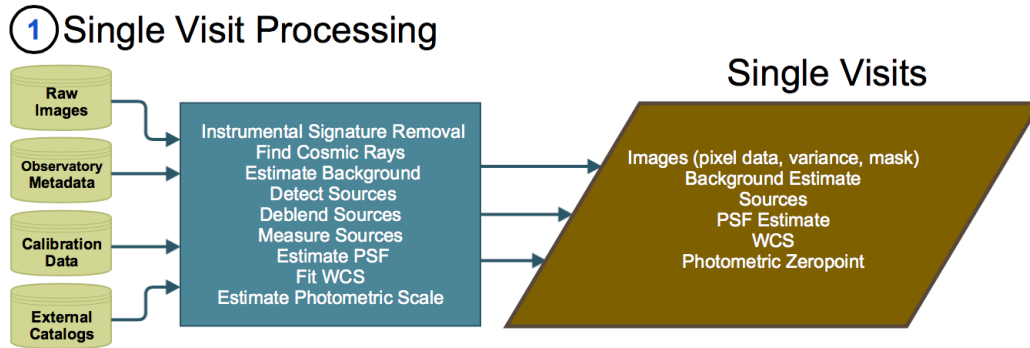


FIGURE 3: Illustration of the conceptual algorithm design for Single Visit Processing pipeline.

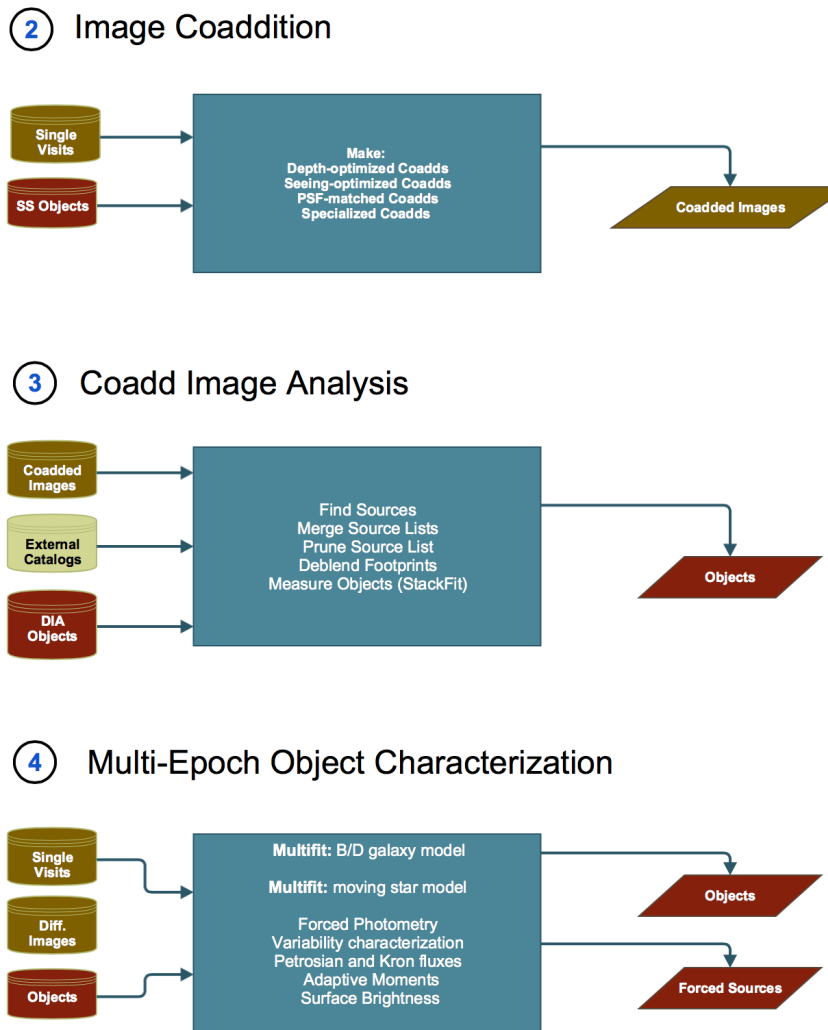
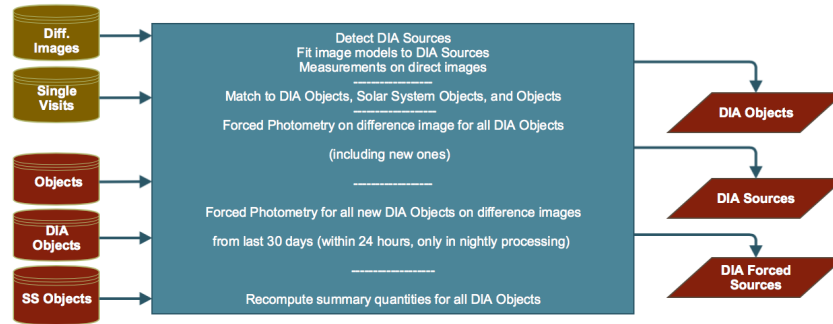


FIGURE 4: Illustration of the conceptual algorithm design for Image Coaddition, Coadded Image Analysis, and Multi-epoch Object Characterization pipelines.

## 5 Image Differencing



## 6 Difference Image Analysis



## 7 Alert Generation and Distribution

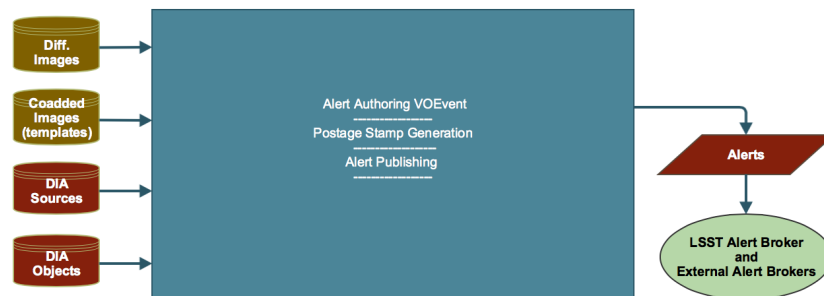


FIGURE 5: Illustration of the conceptual algorithm design for Image Differencing, Difference Image Analysis, and Alert Generation and Distribution pipelines.

## 8 Moving Object Processing System

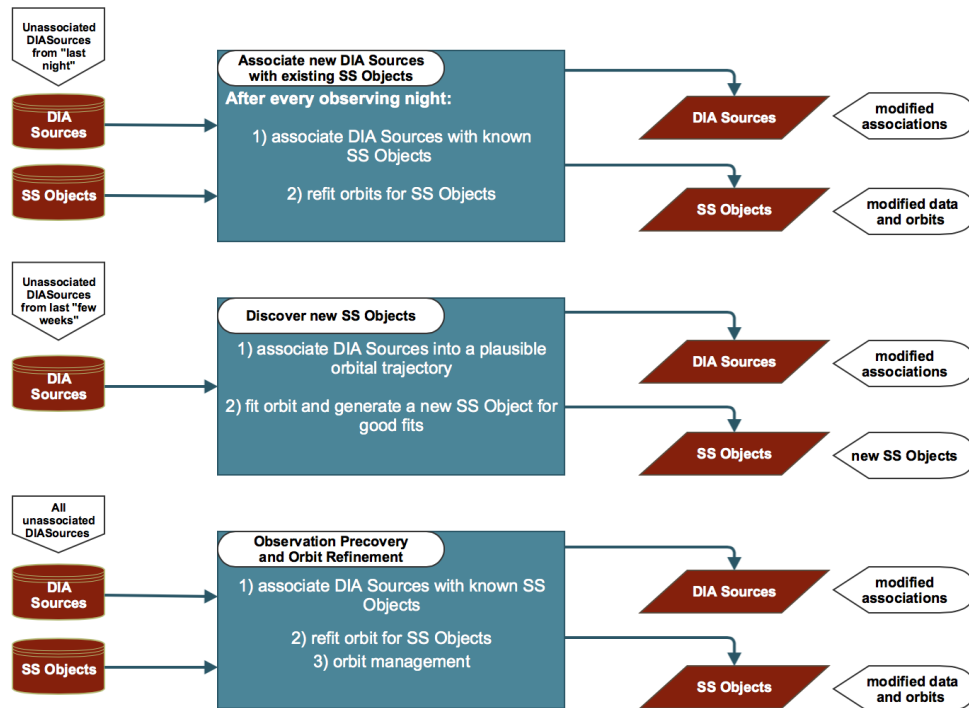


FIGURE 6: Illustration of the conceptual algorithm design for the Moving Object Processing Software pipeline.